



Computer generated image - The Chelmer

THE CHELMER

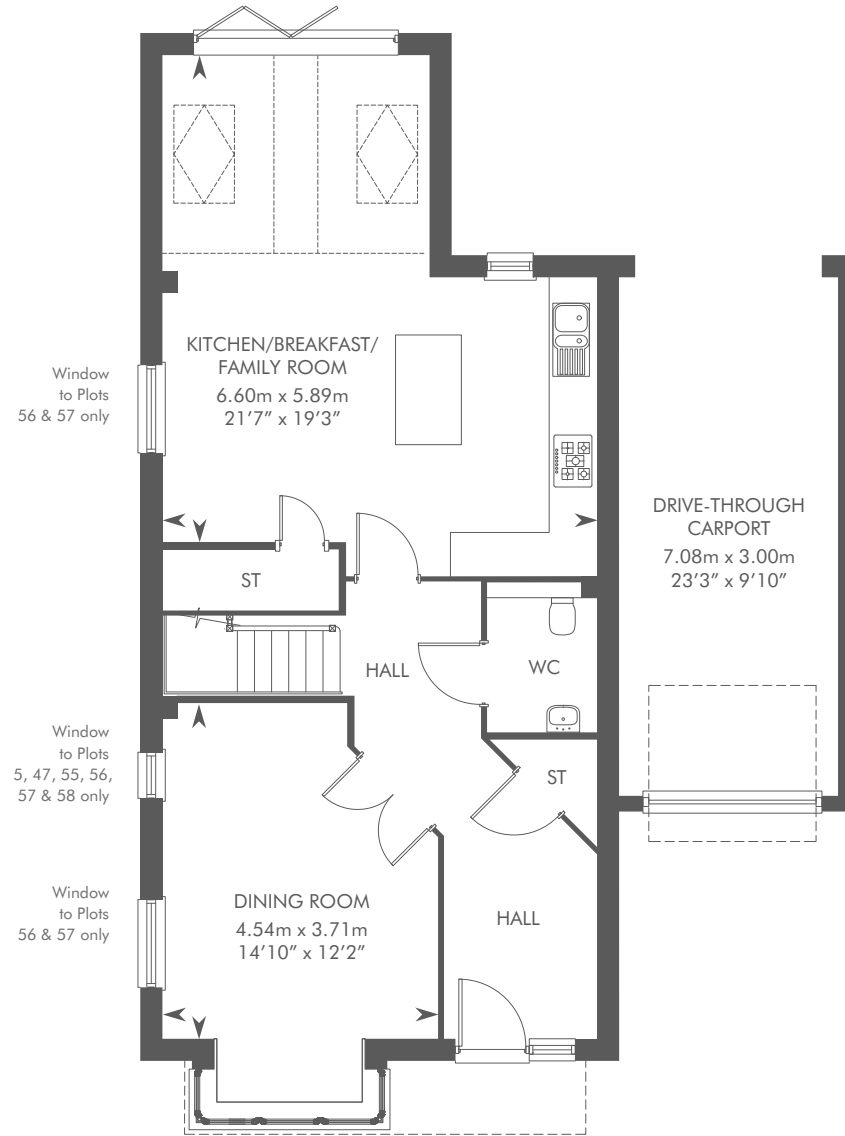
4 BEDROOM END-TERRACE AND SEMI-DETACHED HOME WITH DRIVE-THROUGH CARPORT



THE CHELMER

PLOTS 2, 6, 46, 53, 55, 57 & 59 – AS SHOWN

PLOTS 3, 7, 47, 52, 54, 56, 58 & 60 – HANDED

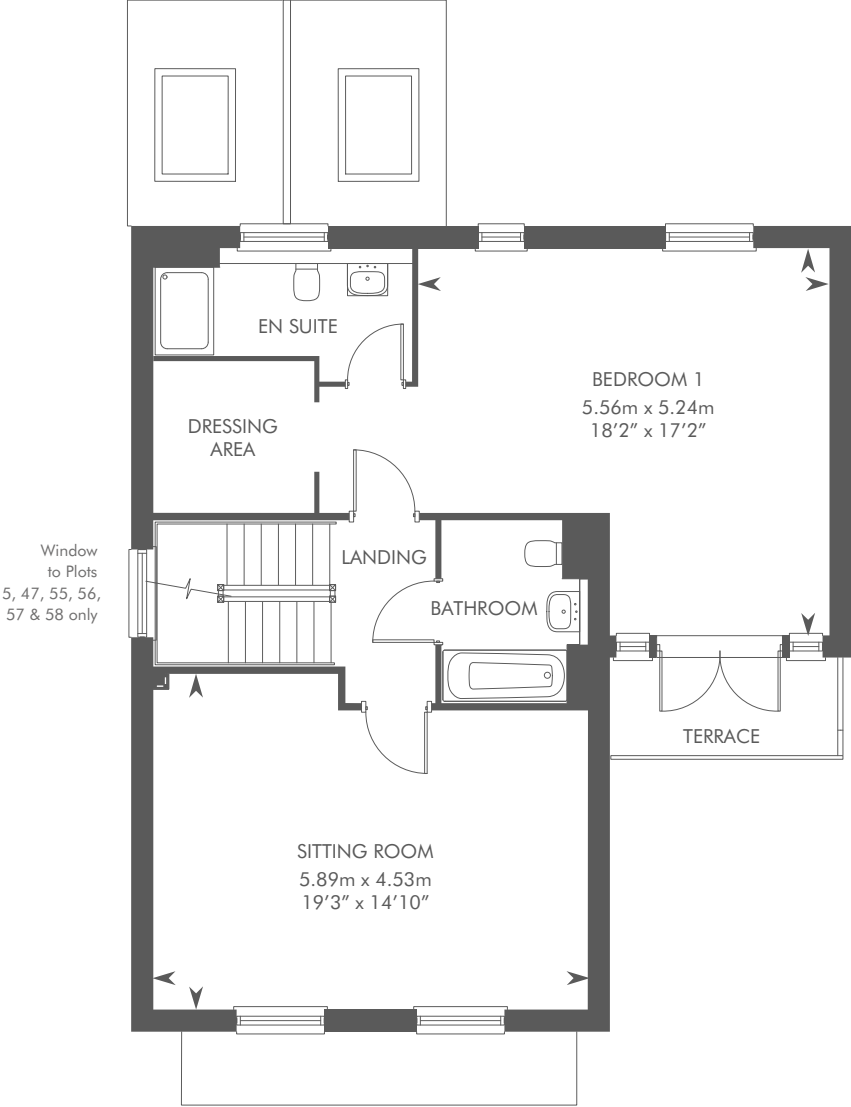


GROUND FLOOR

THE CHELMER

PLOTS 2, 6, 46, 53, 55, 57 & 59 – AS SHOWN

PLOTS 3, 7, 47, 52, 54, 56, 58 & 60 – HANDED

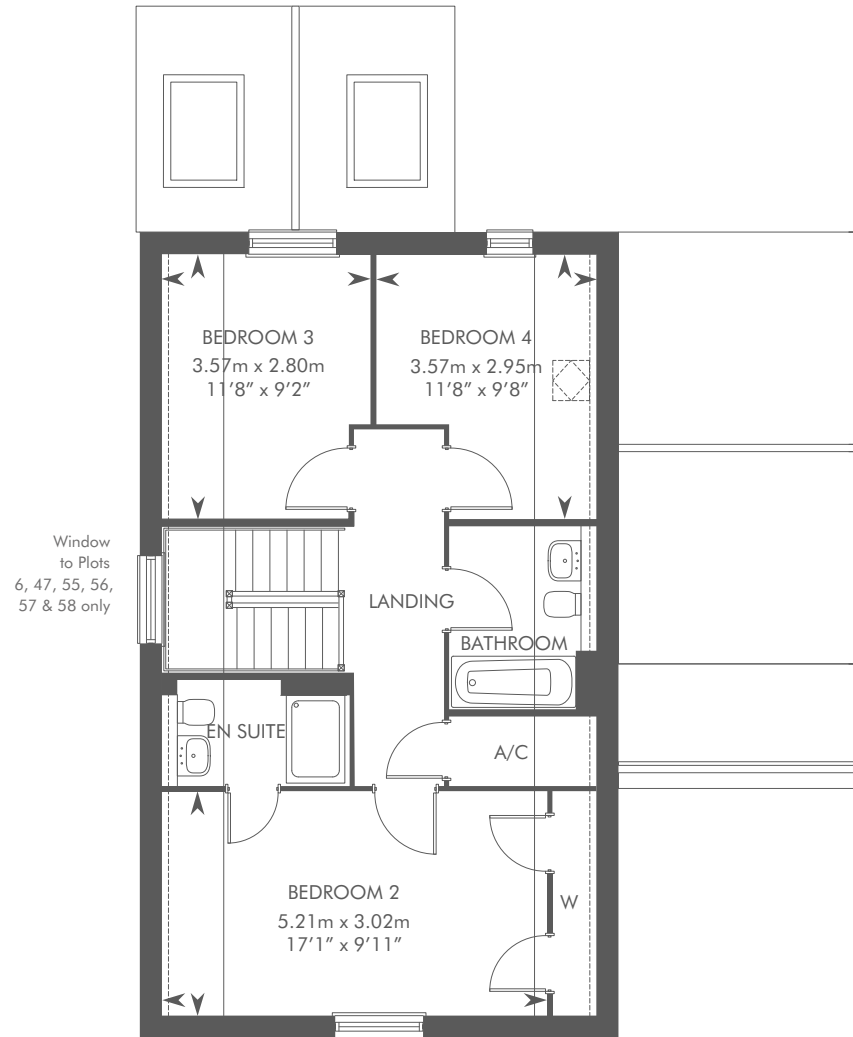


FIRST FLOOR

THE CHELMER

PLOTS 2, 6, 46, 53, 55, 57 & 59 – AS SHOWN

PLOTS 3, 7, 47, 52, 54, 56, 58 & 60 – HANDED



SECOND FLOOR

Dotted lines denote reduced head height or structure above and approximate position of 1800mm ceiling height. Solid thin line denotes extent of full height ceiling. Please ask your Sales Consultant for further details. A/C: Airing cupboard. ST: Store cupboard. W: Wardrobe. ☐ Roof light.

The consumer protection from unfair trading regulations 2008. CALA Homes (North home Counties) Limited operates a policy of continual product development and the specifications outlined in this brochure are indicative only. CALA reserves the right to implement minor changes to the sizes and specifications shown on any plans or drawings in this brochure without warning. Where alterations to the design, construction or materials to be used in the construction of the property would materially alter the internal floor space, appearance or market value of the property, we will ensure that these changes are communicated to potential purchasers. The computer generated images and photographs do not necessarily represent the actual finishings/elevation or treatments, landscaping, furnishings and fittings at this development. Whilst these particulars are prepared with all due care for the convenience of intending purchasers, the information is intended as a guide. Floor plans, dimensions and specifications are correct at the time of print.

