



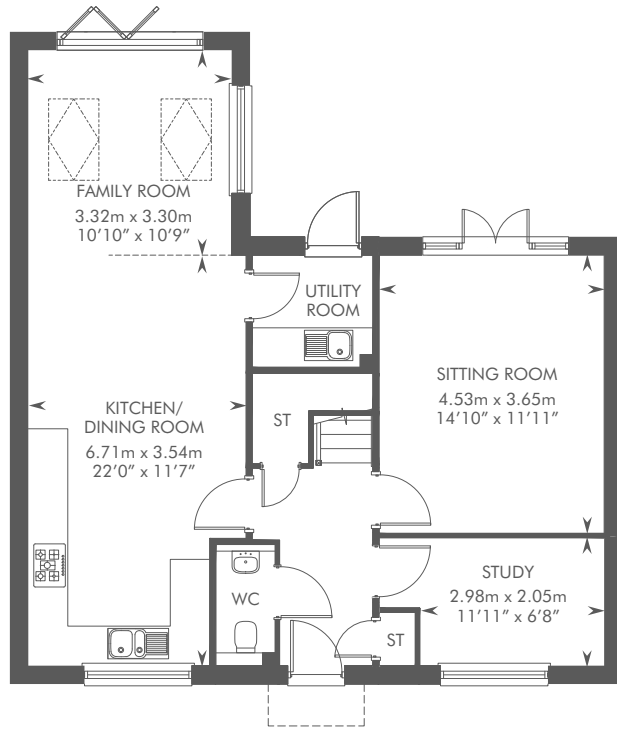
Computer generated image - The Marston

THE MARSTON

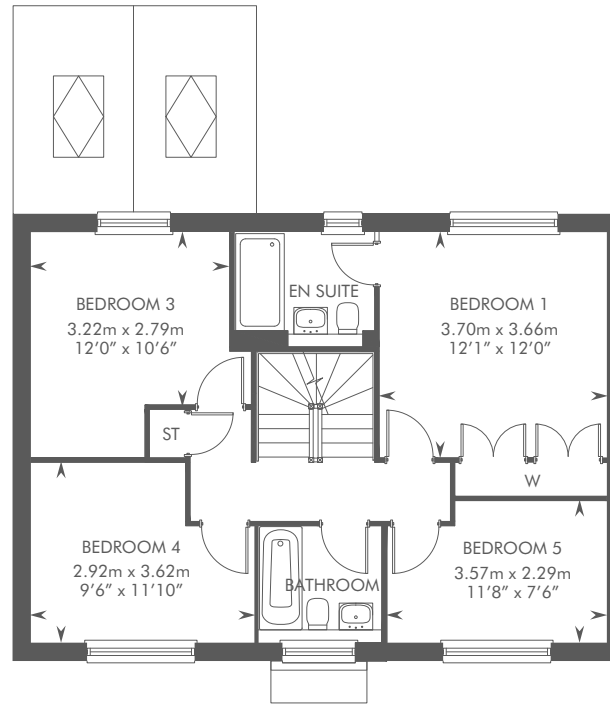
5 BEDROOM DETACHED HOME



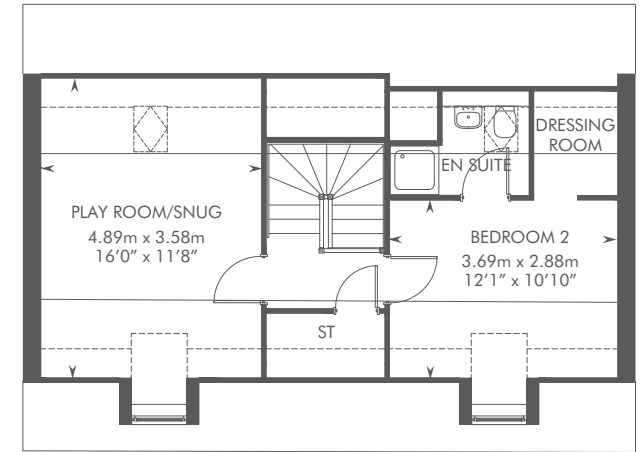
THE MARSTON
 PLOTS 168, 178 & 224 – AS SHOWN
 PLOTS 183 & 228 – HANDED



GROUND FLOOR



FIRST FLOOR



SECOND FLOOR

Dotted lines denote reduced head height or structure above and approximate position of 1800mm ceiling height. Solid thin line denotes extent of full height ceiling.
 Please ask your Sales Consultant for further details. ST: Store cupboard. W: Wardrobe. A/C: Airing cupboard. Roof light

The consumer protection from unfair trading regulations 2008. CALA Homes (Midlands) Ltd operates a policy of continual product development and the specifications outlined in this brochure are indicative only. CALA reserves the right to implement minor changes to the sizes and specifications shown on any plans or drawings in this brochure without warning. Where alterations to the design, construction or materials to be used in the construction of the property would materially alter the internal floor space, appearance or market value of the property, we will ensure that these changes are communicated to potential purchasers. Whilst these particulars are prepared with all due care for the convenience of intending purchasers, the information is intended as a guide. Floor plans, dimensions and specifications are correct at the time of print.





Photography of The Solville

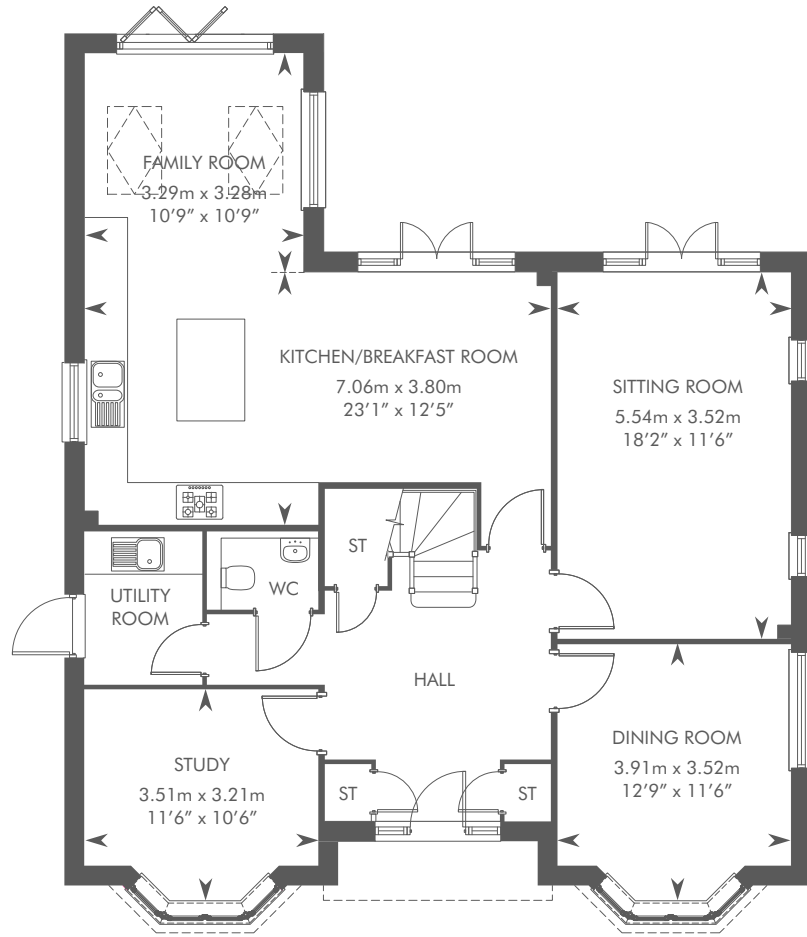
THE SOLVILLE

5 BEDROOM DETACHED HOME

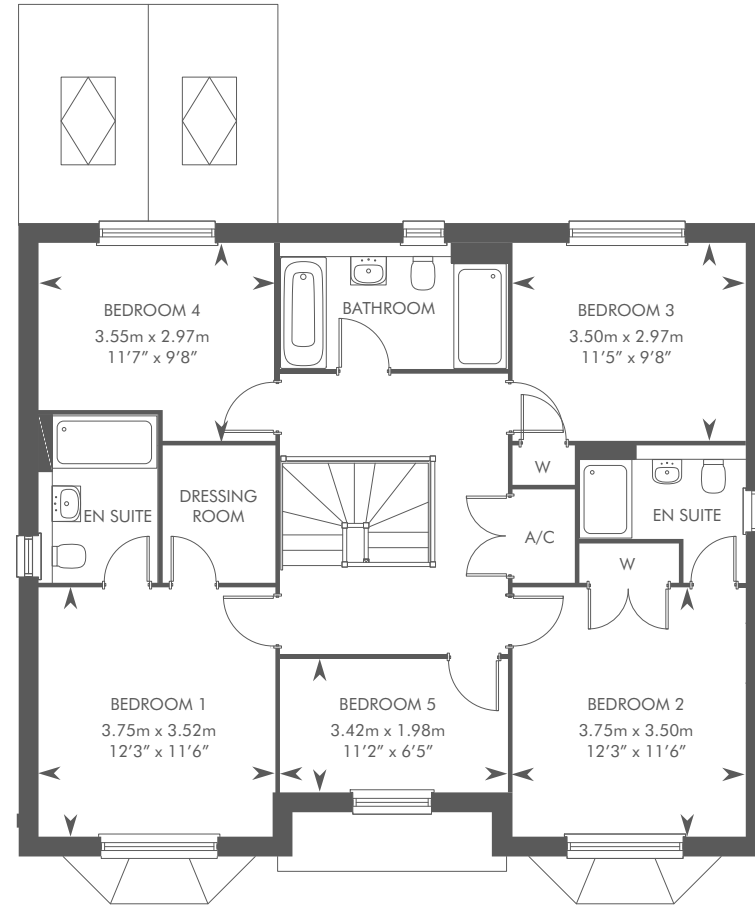


THE SOLVILLE

PLOTS 182, 207, 209, 223, 225, 268, 269, & 270 – HANDED



GROUND FLOOR



FIRST FLOOR

SCAN TO VIEW
A VIRTUAL TOUR



Plot 207 & 280 have a stone exterior. Please ask your Sales Consultant for further details. Bi-fold door design is subject to change. ST: Store cupboard. W: Wardrobe. A/C: Airing cupboard. ☒ Roof light.

The consumer protection from unfair trading regulations 2008. CALA Homes (Midlands) Ltd operates a policy of continual product development and the specifications outlined in this brochure are indicative only. CALA reserves the right to implement minor changes to the sizes and specifications shown on any plans or drawings in this brochure without warning. Where alterations to the design, construction or materials to be used in the construction of the property would materially alter the internal floor space, appearance or market value of the property, we will ensure that these changes are communicated to potential purchasers. Whilst these particulars are prepared with all due care for the convenience of intending purchasers, the information is intended as a guide. Floor plans, dimensions and specifications are correct at the time of print.





Photography of The Tilhurst

THE TILHURST

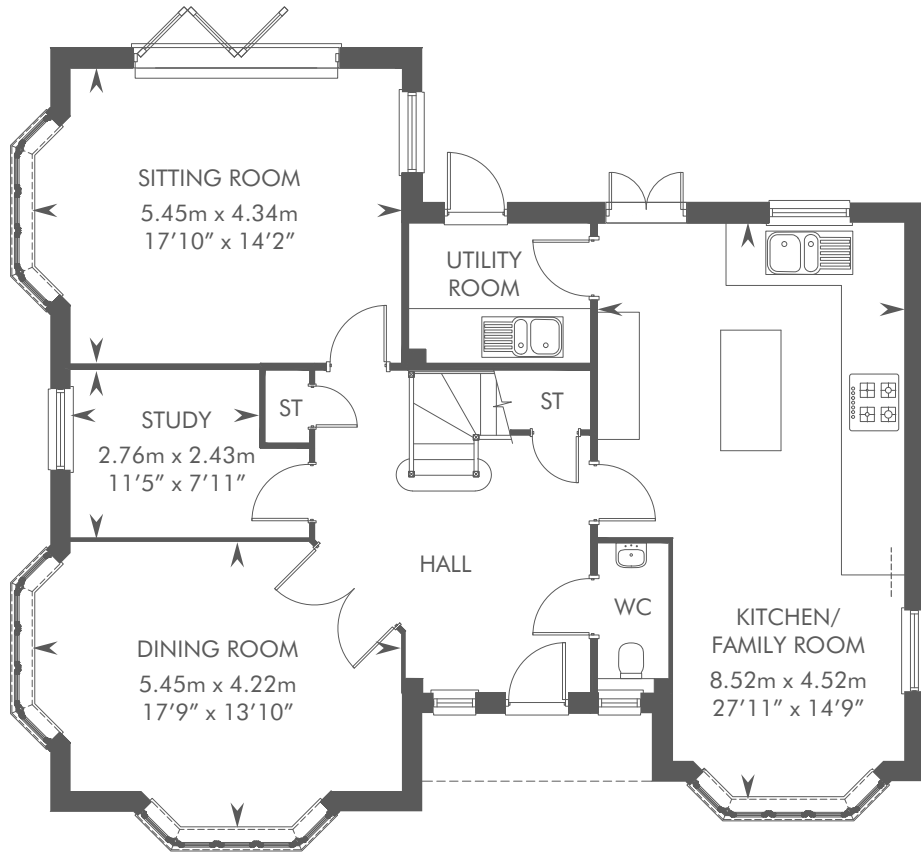
5 BEDROOM DETACHED HOME



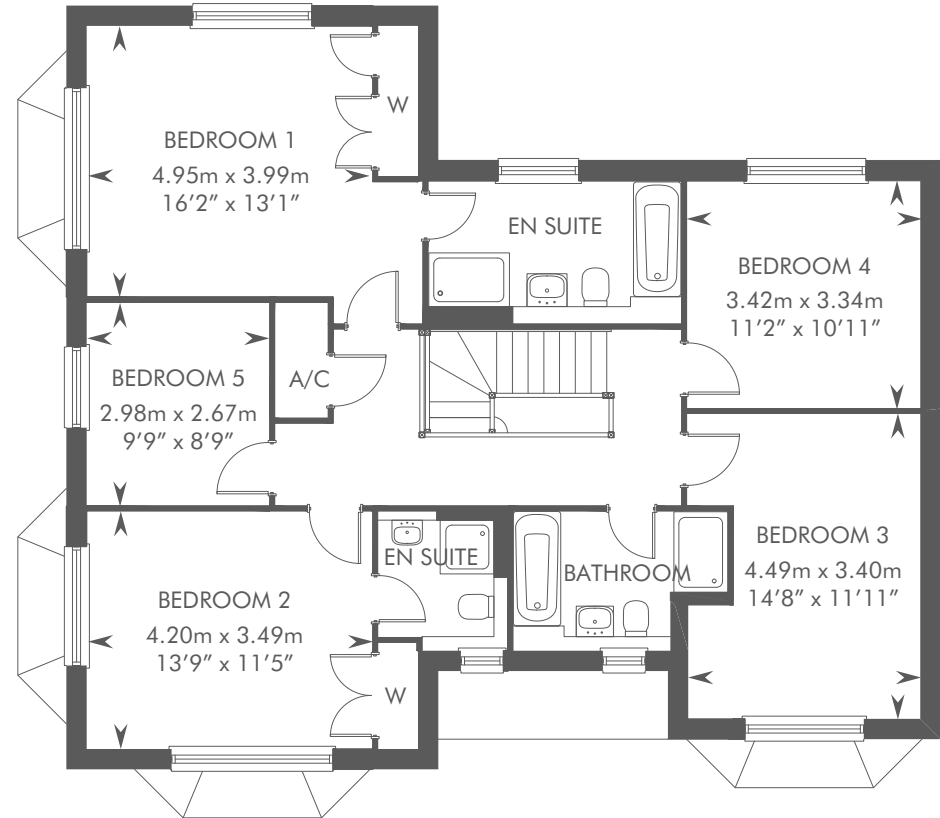
THE TILHURST

PLOTS 181, 208, 226, & 267 – AS SHOWN

PLOTS 180, 227 & 267 – HANDED



GROUND FLOOR



FIRST FLOOR

SCAN TO VIEW
A VIRTUAL TOUR



Please ask your Sales Consultant for further details. Bi-fold door design is subject to change. ST: Store cupboard. W: Wardrobe. A/C: Airing cupboard.

The consumer protection from unfair trading regulations 2008. CALA Homes (Midlands) Ltd operates a policy of continual product development and the specifications outlined in this brochure are indicative only. CALA reserves the right to implement minor changes to the sizes and specifications shown on any plans or drawings in this brochure without warning. Where alterations to the design, construction or materials to be used in the construction of the property would materially alter the internal floor space, appearance or market value of the property, we will ensure that these changes are communicated to potential purchasers. Whilst these particulars are prepared with all due care for the convenience of intending purchasers, the information is intended as a guide. Floor plans, dimensions and specifications are correct at the time of print.





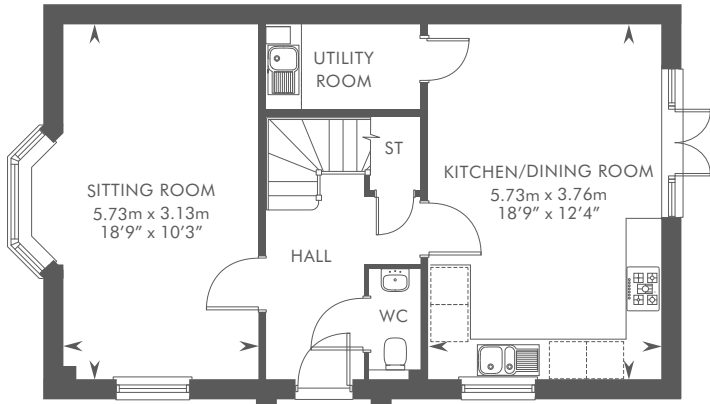
Computer generated image of The Bampton is for illustration purposes only, plot specific elevations and finishes may vary.

THE BAMPTON

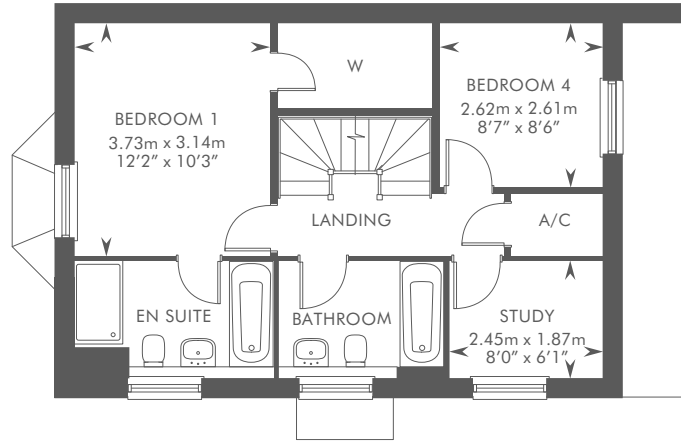
4 BEDROOM DETACHED HOME



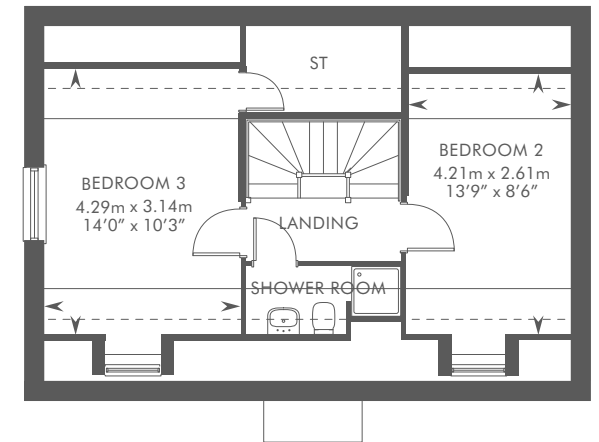
THE BAMPTON
 PLOT 216 – AS SHOWN
 PLOTS 167 & 176 – HANDED



GROUND FLOOR



FIRST FLOOR



SECOND FLOOR

SCAN TO VIEW
 A VIRTUAL TOUR



Dotted lines denote reduced head height or structure above and approximate position of 1800mm ceiling height. Solid thin line denotes extent of full height ceiling. Please ask your Sales Consultant for further details. ST: Store cupboard. W: Wardrobe. A/C: Airing cupboard.

The consumer protection from unfair trading regulations 2008. CALA Homes (Midlands) Ltd operates a policy of continual product development and the specifications outlined in this brochure are indicative only. CALA reserves the right to implement minor changes to the sizes and specifications shown on any plans or drawings in this brochure without warning. Where alterations to the design, construction or materials to be used in the construction of the property would materially alter the internal floor space, appearance or market value of the property, we will ensure that these changes are communicated to potential purchasers. Whilst these particulars are prepared with all due care for the convenience of intending purchasers, the information is intended as a guide. Floor plans, dimensions and specifications are correct at the time of print.





THE JAYFIELD

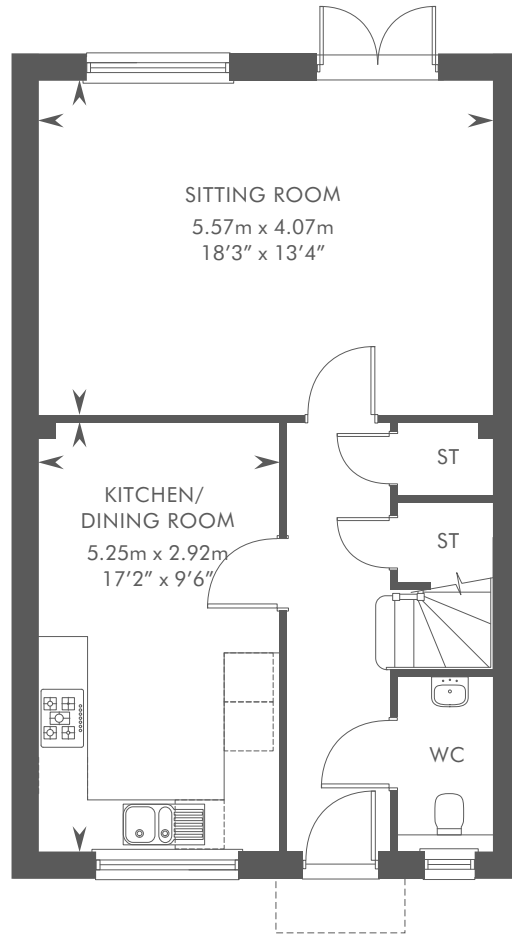
4 BEDROOM DETACHED HOME



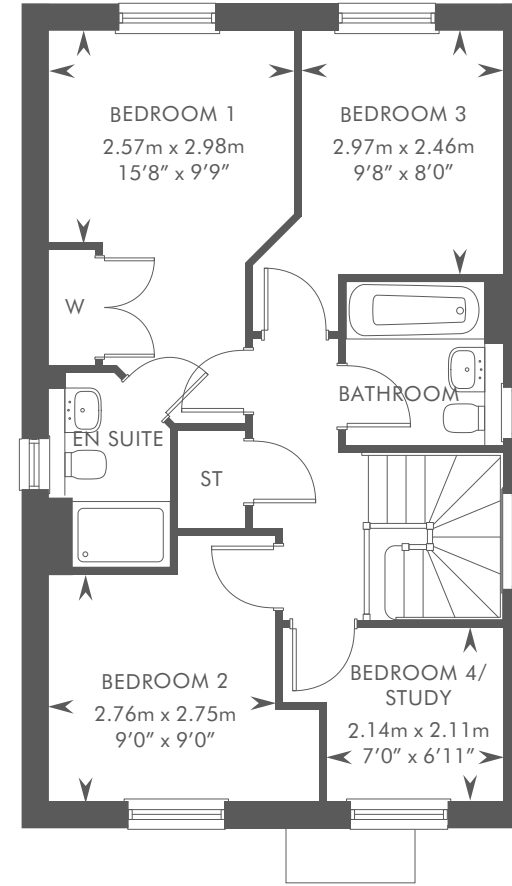
THE JAYFIELD

PLOTS 163,166, 272, 274 & 276 – AS SHOWN

PLOTS 195 & 198 – HANDED



GROUND FLOOR



FIRST FLOOR

Please ask your Sales Consultant for further details. ST: Store cupboard. W: Wardrobe.

The consumer protection from unfair trading regulations 2008. CALA Homes (Midlands) Ltd operates a policy of continual product development and the specifications outlined in this brochure are indicative only. CALA reserves the right to implement minor changes to the sizes and specifications shown on any plans or drawings in this brochure without warning. Where alterations to the design, construction or materials to be used in the construction of the property would materially alter the internal floor space, appearance or market value of the property, we will ensure that these changes are communicated to potential purchasers. Whilst these particulars are prepared with all due care for the convenience of intending purchasers, the information is intended as a guide. Floor plans, dimensions and specifications are correct at the time of print.



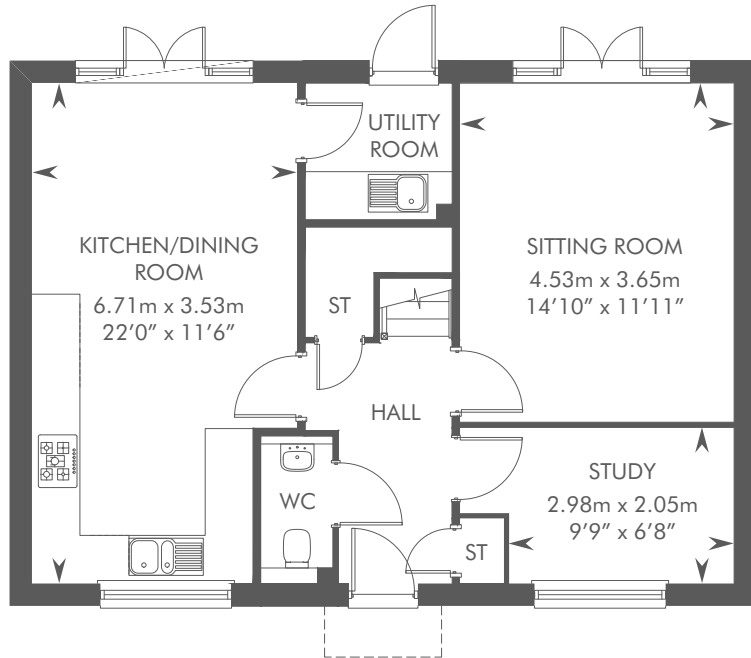


THE LENHAM

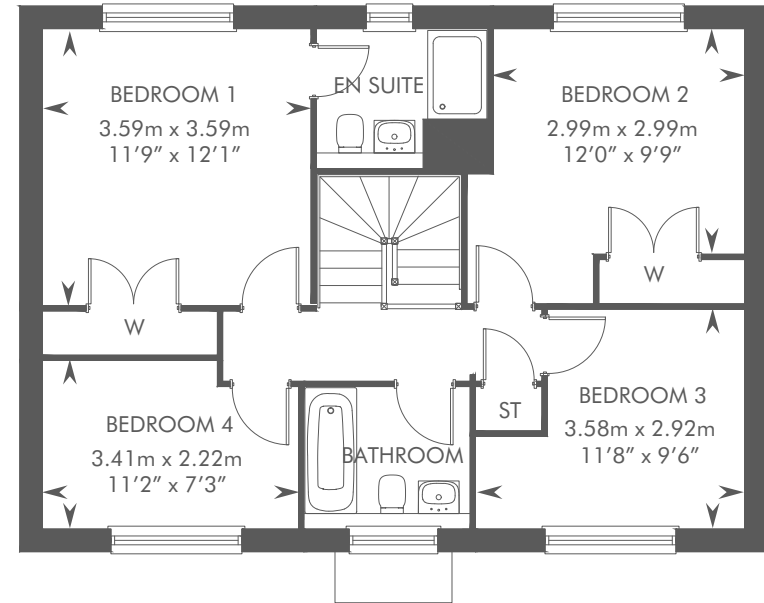
4 BEDROOM DETACHED HOME



THE LENHAM
PLOTS 156 & 243 – AS SHOWN
PLOTS 210, 217 & 220 – HANDED



GROUND FLOOR



FIRST FLOOR

Please ask your Sales Consultant for further details. ST: Store cupboard. W: Wardrobe.

The consumer protection from unfair trading regulations 2008. CALA Homes (Midlands) Ltd operates a policy of continual product development and the specifications outlined in this brochure are indicative only. CALA reserves the right to implement minor changes to the sizes and specifications shown on any plans or drawings in this brochure without warning. Where alterations to the design, construction or materials to be used in the construction of the property would materially alter the internal floor space, appearance or market value of the property, we will ensure that these changes are communicated to potential purchasers. Whilst these particulars are prepared with all due care for the convenience of intending purchasers, the information is intended as a guide. Floor plans, dimensions and specifications are correct at the time of print.





THE KINFIELD

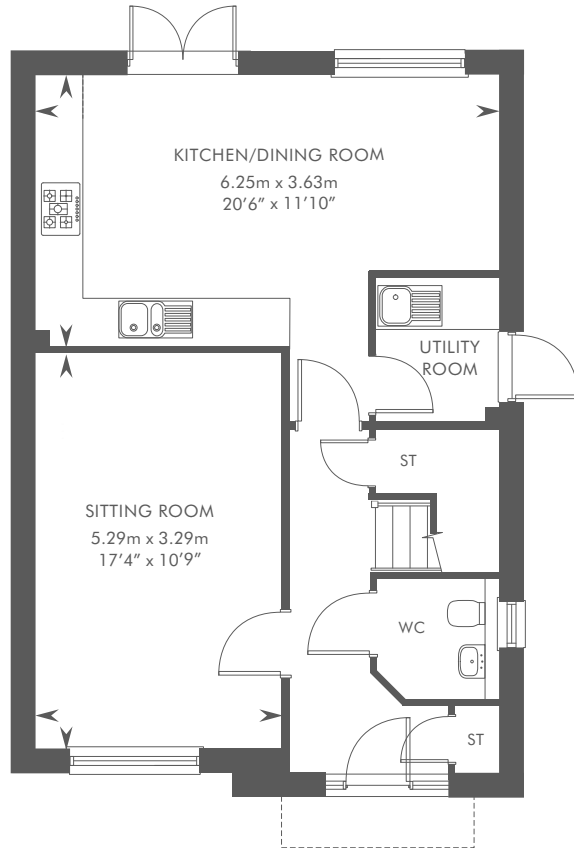
4 BEDROOM SEMI-DETACHED AND DETACHED HOME



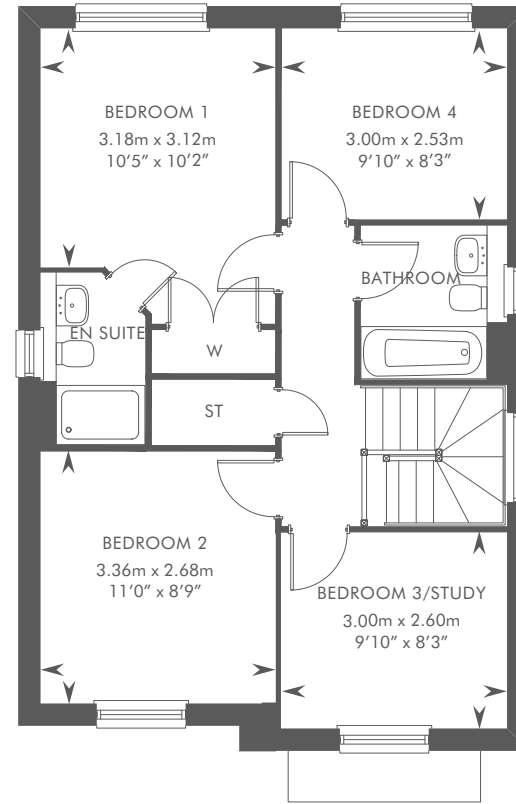
THE KINFIELD

PLOTS 186 & 273 – AS SHOWN

PLOTS 185, 196, 199, 245, 246, 248 & 249 – HANDED



GROUND FLOOR



FIRST FLOOR

Please ask your Sales Consultant for further details. ST: Store cupboard. W: Wardrobe.

The consumer protection from unfair trading regulations 2008. CALA Homes (Midlands) Ltd operates a policy of continual product development and the specifications outlined in this brochure are indicative only. CALA reserves the right to implement minor changes to the sizes and specifications shown on any plans or drawings in this brochure without warning. Where alterations to the design, construction or materials to be used in the construction of the property would materially alter the internal floor space, appearance or market value of the property, we will ensure that these changes are communicated to potential purchasers. Whilst these particulars are prepared with all due care for the convenience of intending purchasers, the information is intended as a guide. Floor plans, dimensions and specifications are correct at the time of print.





THE NENHURST

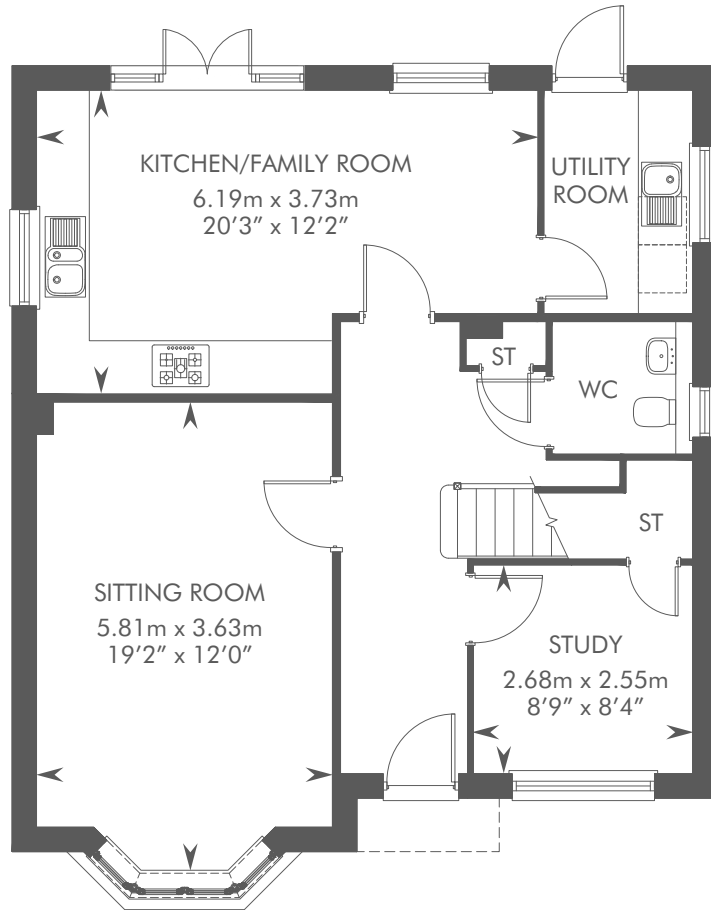
4 BEDROOM DETACHED HOME



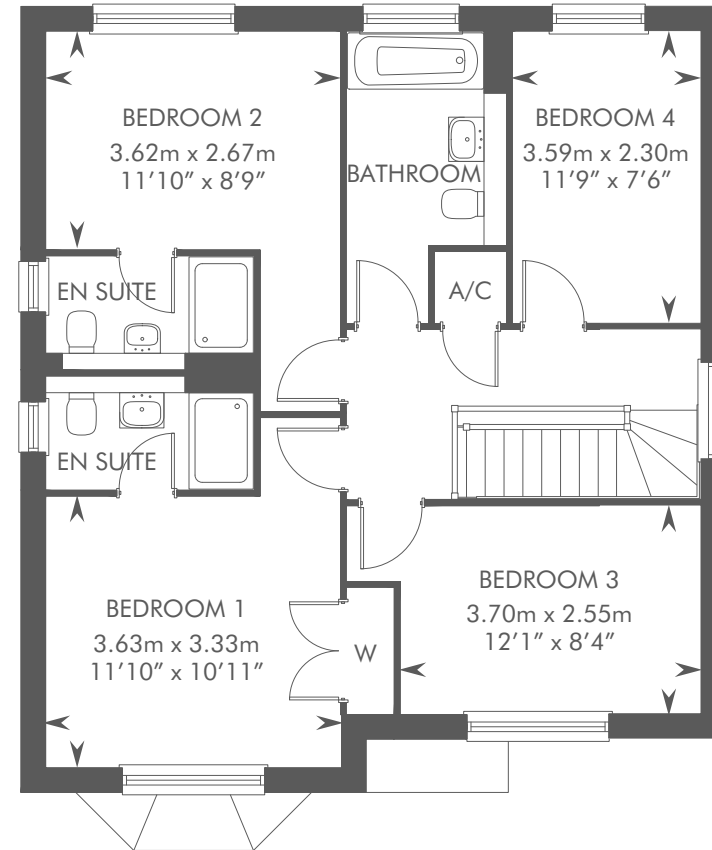
THE NENHURST

PLOTS 177, 179 & 200 – AS SHOWN

PLOTS 160, 206 & 218 – HANDED



GROUND FLOOR



FIRST FLOOR

Please ask your Sales Consultant for further details. ST: Store cupboard. W: Wardrobe. A/C: Airing cupboard.

The consumer protection from unfair trading regulations 2008. CALA Homes (Midlands) Ltd operates a policy of continual product development and the specifications outlined in this brochure are indicative only. CALA reserves the right to implement minor changes to the sizes and specifications shown on any plans or drawings in this brochure without warning. Where alterations to the design, construction or materials to be used in the construction of the property would materially alter the internal floor space, appearance or market value of the property, we will ensure that these changes are communicated to potential purchasers. Whilst these particulars are prepared with all due care for the convenience of intending purchasers, the information is intended as a guide. Floor plans, dimensions and specifications are correct at the time of print.

SCAN TO VIEW
A VIRTUAL TOUR





THE OATVALE

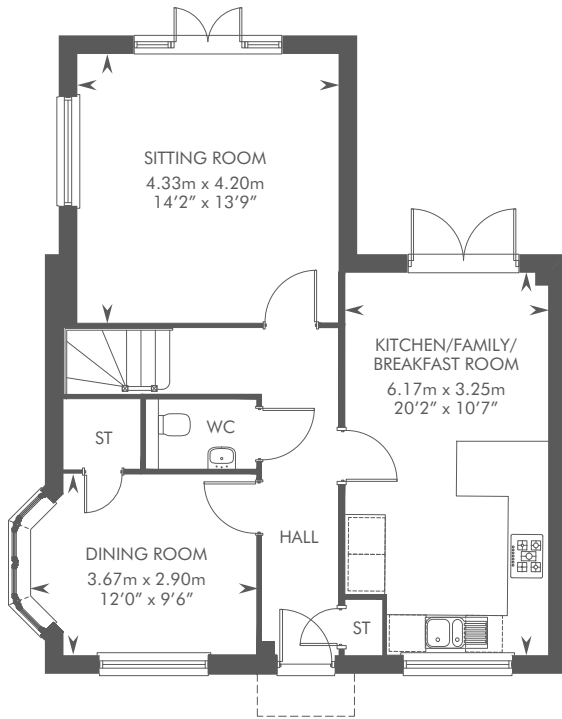
4 BEDROOM DETACHED HOME



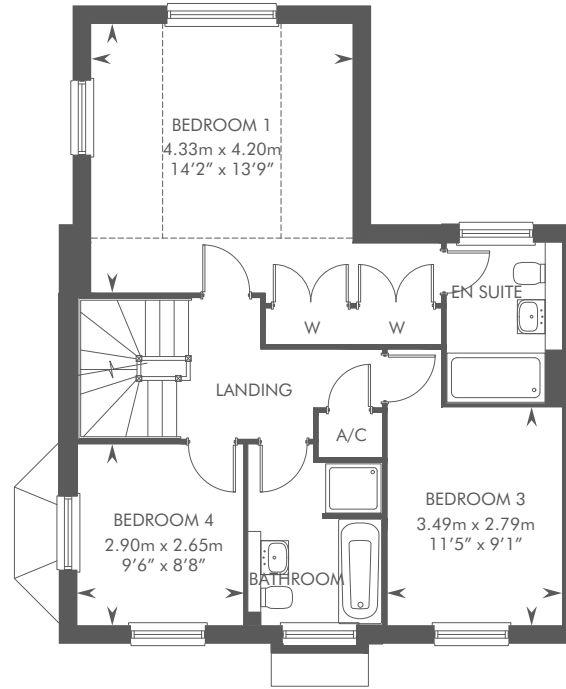
THE OATVALE

PLOTS 188, 192, 212 & 229 – AS SHOWN

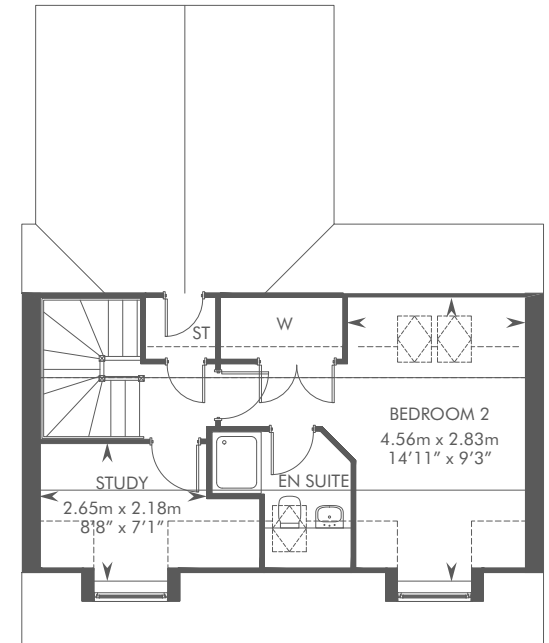
PLOTS 155, 221, 242 & 266 – HANDED



GROUND FLOOR



FIRST FLOOR




SECOND FLOOR

SCAN TO VIEW
A VIRTUAL TOUR



Plots 155, 212, 266 & 278 have a stone exterior. All other plots have a different material finish. Please ask your Sales Consultant for details.

Dotted lines denote reduced head height or structure above and approximate position of 1800mm ceiling height. Solid thin line denotes extent of full height ceiling. Please ask your Sales Consultant for further details. ST: Store cupboard. W: Wardrobe. A/C: Airing cupboard.  Roof light.

The consumer protection from unfair trading regulations 2008. CALA Homes (Midlands) Ltd operates a policy of continual product development and the specifications outlined in this brochure are indicative only. CALA reserves the right to implement minor changes to the sizes and specifications shown on any plans or drawings in this brochure without warning. Where alterations to the design, construction or materials to be used in the construction of the property would materially alter the internal floor space, appearance or market value of the property, we will ensure that these changes are communicated to potential purchasers. Whilst these particulars are prepared with all due care for the convenience of intending purchasers, the information is intended as a guide. Floor plans, dimensions and specifications are correct at the time of print.



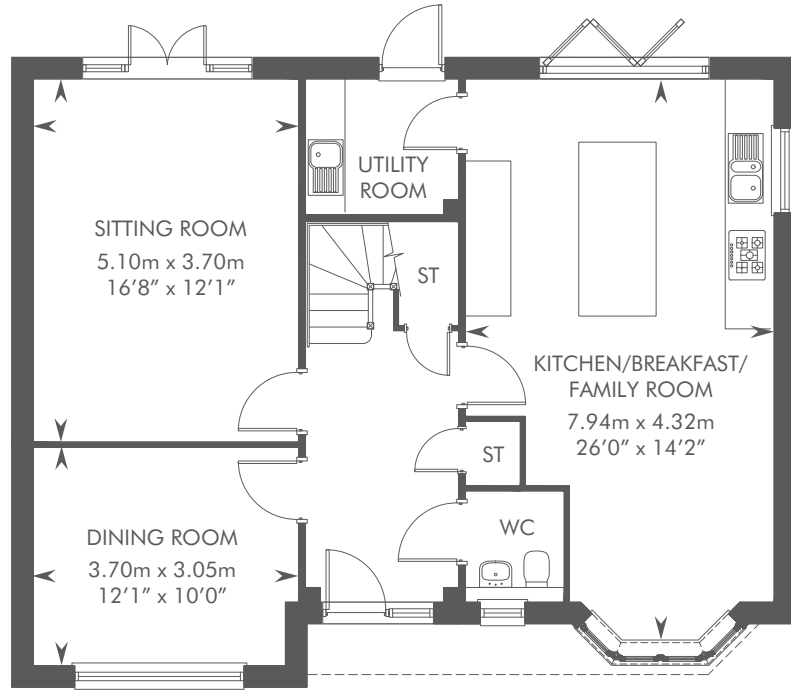


THE OSMORE

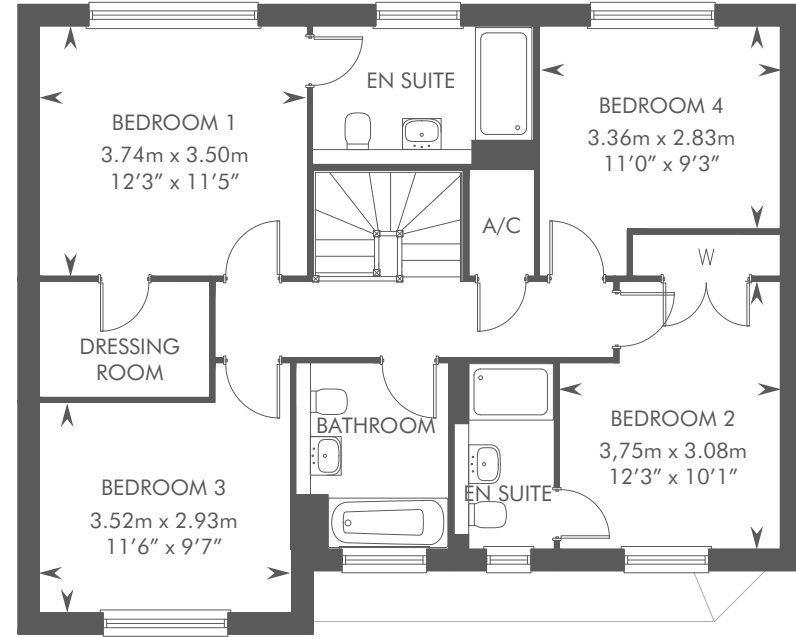
4 BEDROOM DETACHED HOME



THE OSMORE
 PLOTS 161 & 184 – AS SHOWN
 PLOTS 169 & 244 – HANDED



GROUND FLOOR



FIRST FLOOR

Please ask your Sales Consultant for further details. Bi-fold door design is subject to change. ST: Store cupboard. W: Wardrobe. A/C: Airing cupboard.

The consumer protection from unfair trading regulations 2008. CALA Homes (Midlands) Ltd operates a policy of continual product development and the specifications outlined in this brochure are indicative only. CALA reserves the right to implement minor changes to the sizes and specifications shown on any plans or drawings in this brochure without warning. Where alterations to the design, construction or materials to be used in the construction of the property would materially alter the internal floor space, appearance or market value of the property, we will ensure that these changes are communicated to potential purchasers. Whilst these particulars are prepared with all due care for the convenience of intending purchasers, the information is intended as a guide. Floor plans, dimensions and specifications are correct at the time of print.





Computer generated image of The Gosfield is for illustration purposes only, plots specific elevations and finishes may vary.

THE GOSFIELD

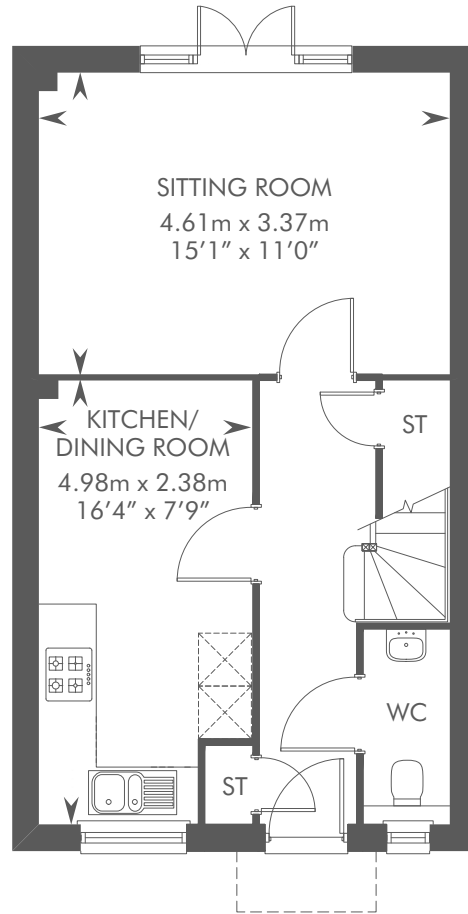
3 BEDROOM SEMI-DETACHED HOME



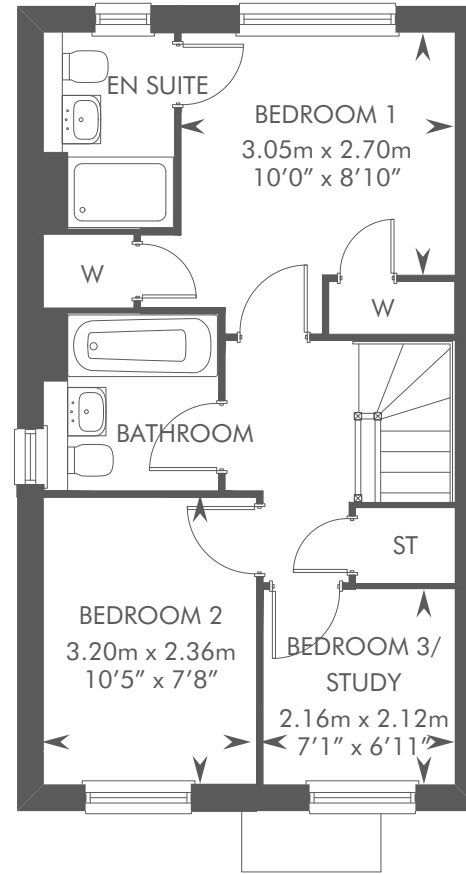
THE GOSFIELD

PLOTS 164 & 238 – AS SHOWN

PLOTS 165 & 239 – HANDED



GROUND FLOOR



FIRST FLOOR

Please ask your Sales Consultant for further details. ST: Store cupboard. W: Wardrobe.

The consumer protection from unfair trading regulations 2008. CALA Homes (Midlands) Ltd operates a policy of continual product development and the specifications outlined in this brochure are indicative only. CALA reserves the right to implement minor changes to the sizes and specifications shown on any plans or drawings in this brochure without warning. Where alterations to the design, construction or materials to be used in the construction of the property would materially alter the internal floor space, appearance or market value of the property, we will ensure that these changes are communicated to potential purchasers. Whilst these particulars are prepared with all due care for the convenience of intending purchasers, the information is intended as a guide. Floor plans, dimensions and specifications are correct at the time of print.





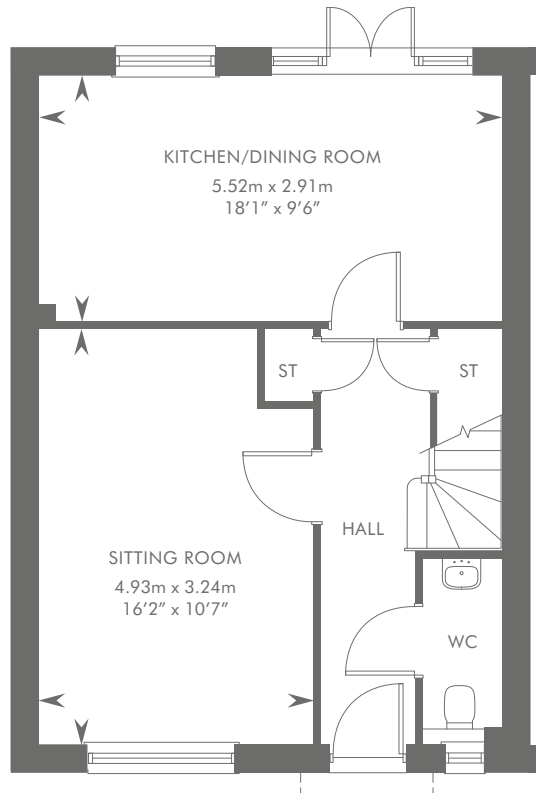
Computer generated image of The Himscot is for illustration purposes only, plots specific elevations and finishes may vary.

THE HIMSCOT

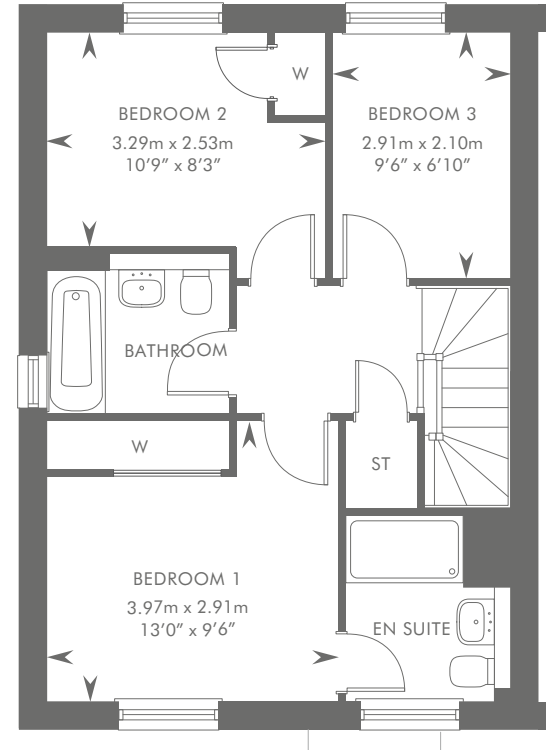
3 BEDROOM SEMI-DETACHED HOME



THE HIMSCOT
PLOT 174 – AS SHOWN
PLOT 175 – HANDED



GROUND FLOOR



FIRST FLOOR

Please ask your Sales Consultant for further details. ST: Store cupboard. W: Wardrobe.

The consumer protection from unfair trading regulations 2008. CALA Homes (Midlands) Ltd operates a policy of continual product development and the specifications outlined in this brochure are indicative only. CALA reserves the right to implement minor changes to the sizes and specifications shown on any plans or drawings in this brochure without warning. Where alterations to the design, construction or materials to be used in the construction of the property would materially alter the internal floor space, appearance or market value of the property, we will ensure that these changes are communicated to potential purchasers. Whilst these particulars are prepared with all due care for the convenience of intending purchasers, the information is intended as a guide. Floor plans, dimensions and specifications are correct at the time of print.





Photography of The Hunsley

THE HUNSLEY

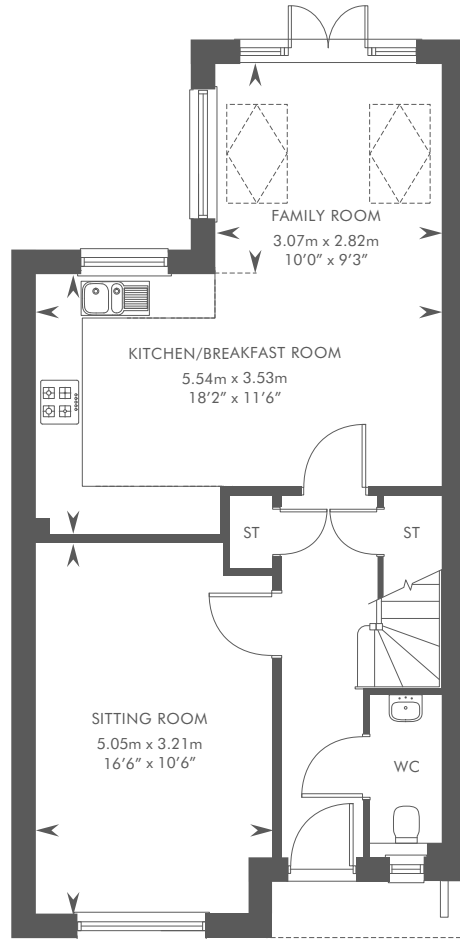
3 BEDROOM DETACHED HOME



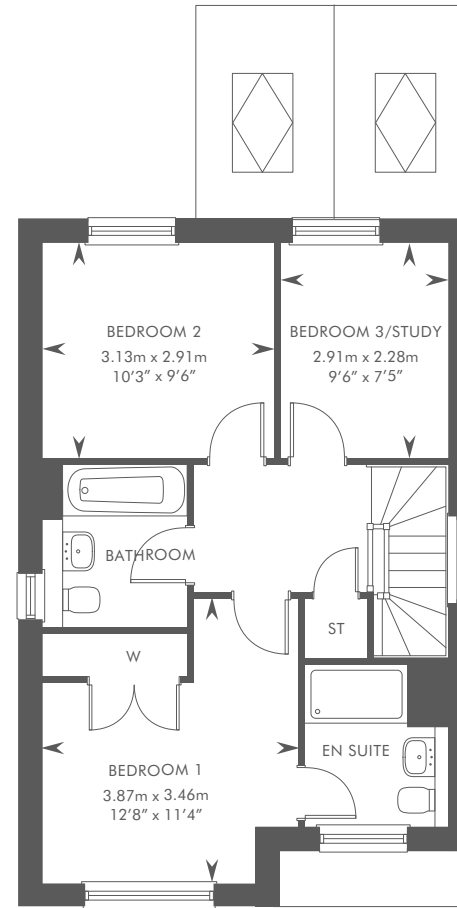
THE HUNSLEY

PLOTS 194, 211, 222 & 265 – AS SHOWN


PLOTS 193, 197, 203, 204, 219 & 275 – HANDED



GROUND FLOOR



FIRST FLOOR

Please ask your Sales Consultant for further details. ST: Store cupboard. W: Wardrobe.  Roof light.

The consumer protection from unfair trading regulations 2008. CALA Homes (Midlands) Ltd operates a policy of continual product development and the specifications outlined in this brochure are indicative only. CALA reserves the right to implement minor changes to the sizes and specifications shown on any plans or drawings in this brochure without warning. Where alterations to the design, construction or materials to be used in the construction of the property would materially alter the internal floor space, appearance or market value of the property, we will ensure that these changes are communicated to potential purchasers. Whilst these particulars are prepared with all due care for the convenience of intending purchasers, the information is intended as a guide. Floor plans, dimensions and specifications are correct at the time of print.

SCAN TO VIEW
A VIRTUAL TOUR





Computer generated image of The Hurwick is for illustration purposes only, plots specific elevations and finishes may vary.

THE HURWICK

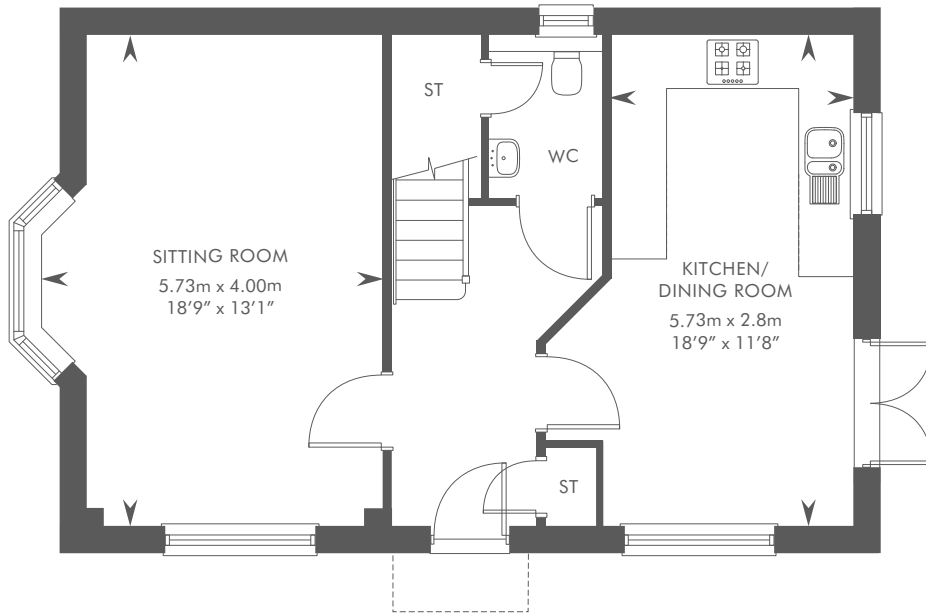
3 BEDROOM DETACHED HOME



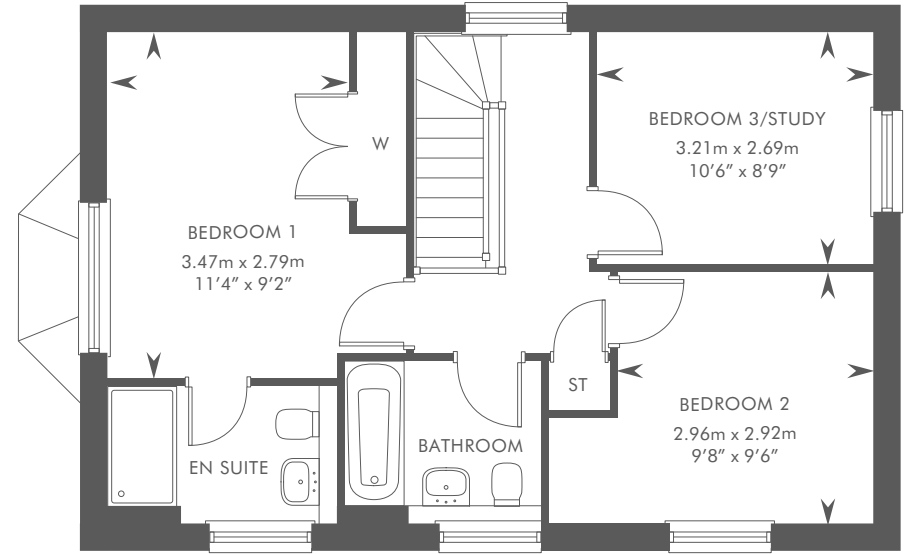
THE HURWICK

PLOTS 162, 170, 187, 191, 202, 205, 235 & 247 – AS SHOWN

PLOTS 232, 250, 262, 271 & 277 – HANDED



GROUND FLOOR



FIRST FLOOR

SCAN TO VIEW
A VIRTUAL TOUR



Plots 205, 247, 250 & 271 have a stone exterior. Please ask your Sales Consultant for further details. ST: Store cupboard. W: Wardrobe.

The consumer protection from unfair trading regulations 2008. CALA Homes (Midlands) Ltd operates a policy of continual product development and the specifications outlined in this brochure are indicative only. CALA reserves the right to implement minor changes to the sizes and specifications shown on any plans or drawings in this brochure without warning. Where alterations to the design, construction or materials to be used in the construction of the property would materially alter the internal floor space, appearance or market value of the property, we will ensure that these changes are communicated to potential purchasers. Whilst these particulars are prepared with all due care for the convenience of intending purchasers, the information is intended as a guide. Floor plans, dimensions and specifications are correct at the time of print.





Computer generated image of The Belford is for illustration purposes only, plots specific elevations and finishes may vary.

THE BELFORD

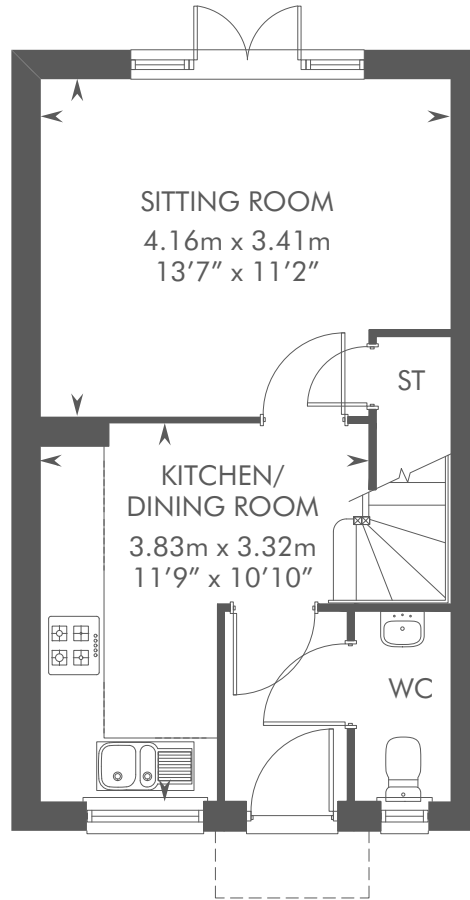
2 BEDROOM TERRACED AND SEMI-DETACHED HOME



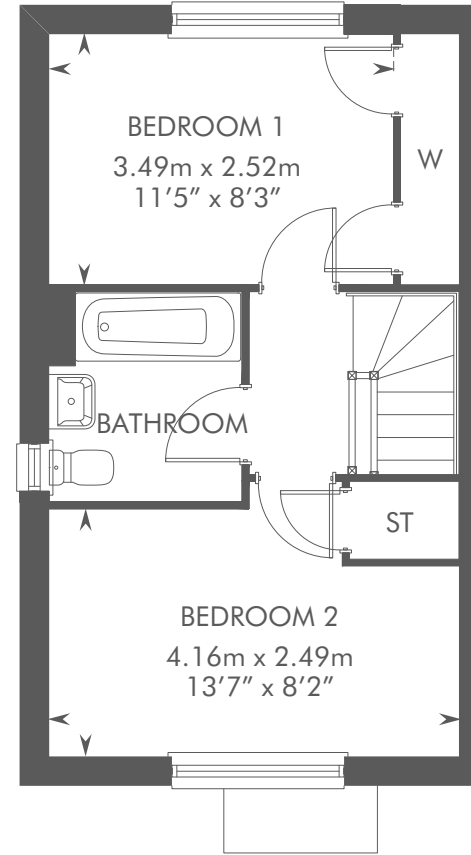
THE BELFORD

PLOTS 171, 213, 236 & 264 – AS SHOWN

PLOTS 172, 173, 214, 215, 237 & 263 – HANDED



GROUND FLOOR



FIRST FLOOR

Please ask your Sales Consultant for further details. ST: Store cupboard. W: Wardrobe.

The consumer protection from unfair trading regulations 2008. CALA Homes (Midlands) Ltd operates a policy of continual product development and the specifications outlined in this brochure are indicative only. CALA reserves the right to implement minor changes to the sizes and specifications shown on any plans or drawings in this brochure without warning. Where alterations to the design, construction or materials to be used in the construction of the property would materially alter the internal floor space, appearance or market value of the property, we will ensure that these changes are communicated to potential purchasers. Whilst these particulars are prepared with all due care for the convenience of intending purchasers, the information is intended as a guide. Floor plans, dimensions and specifications are correct at the time of print.



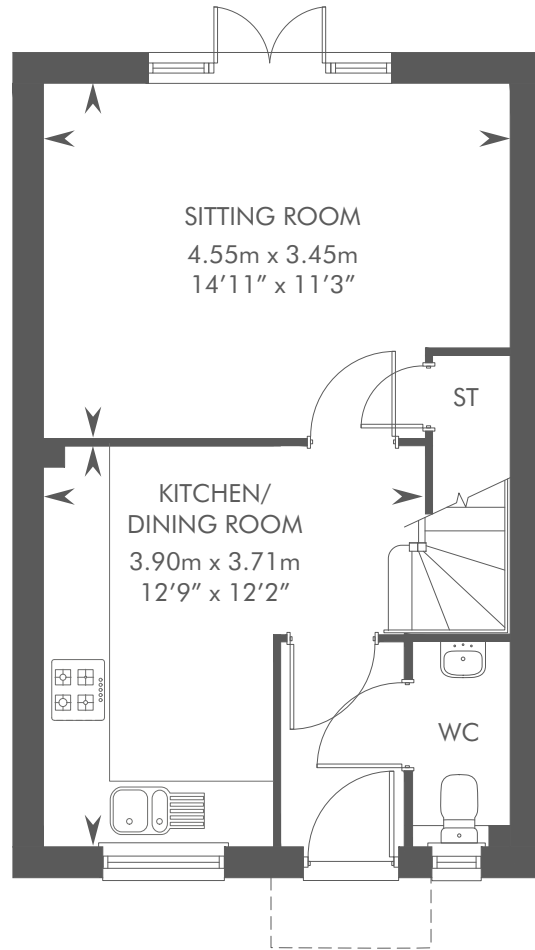


THE DINFIELD

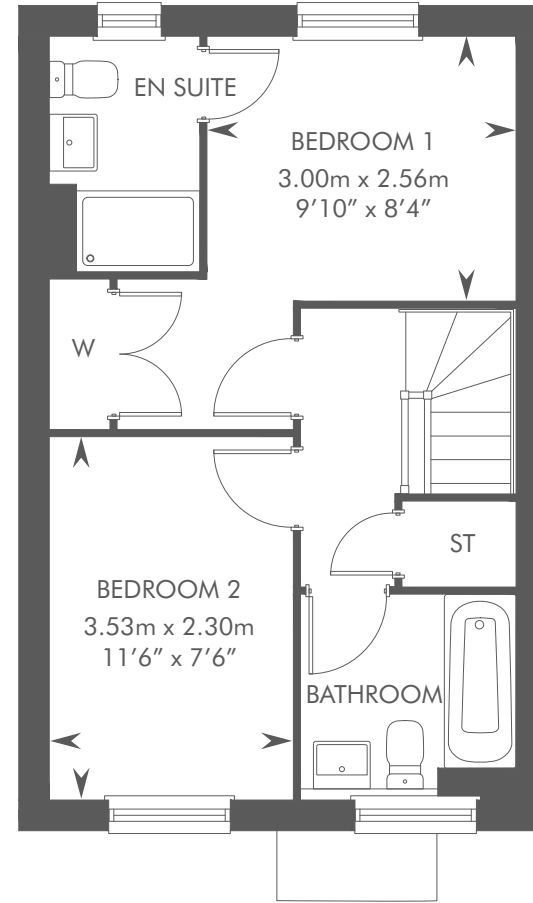
2 BEDROOM SEMI-DETACHED AND TERRACED HOME



THE DINFIELD
PLOTS 157 & 230 – AS SHOWN
PLOTS 158, 159 & 231 – HANDED



GROUND FLOOR



FIRST FLOOR

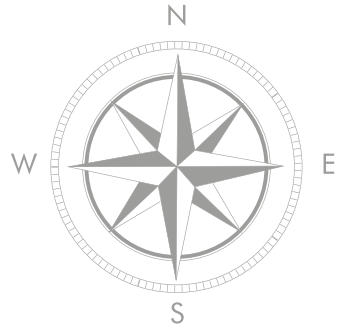
Please ask your Sales Consultant for further details. ST: Store cupboard. W: Wardrobe.

The consumer protection from unfair trading regulations 2008. CALA Homes (Midlands) Ltd operates a policy of continual product development and the specifications outlined in this brochure are indicative only. CALA reserves the right to implement minor changes to the sizes and specifications shown on any plans or drawings in this brochure without warning. Where alterations to the design, construction or materials to be used in the construction of the property would materially alter the internal floor space, appearance or market value of the property, we will ensure that these changes are communicated to potential purchasers. Whilst these particulars are prepared with all due care for the convenience of intending purchasers, the information is intended as a guide. Floor plans, dimensions and specifications are correct at the time of print.



CALA AT FERNLEIGH PARK

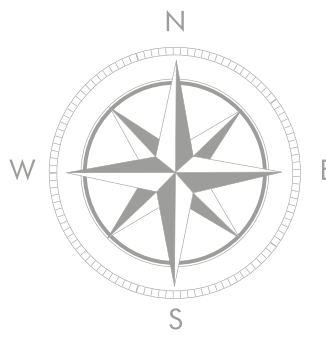
PHASE 1



-  THE MARSTON
5 BEDROOM DETACHED HOME
-  THE SOLVILLE
5 BEDROOM DETACHED HOME
-  THE TILHURST
5 BEDROOM DETACHED HOME
-  THE BAMPTON
4 BEDROOM DETACHED HOME
-  THE JAYFIELD
4 BEDROOM DETACHED HOME
-  THE LENHAM
4 BEDROOM DETACHED HOME
-  THE NENHURST
4 BEDROOM DETACHED HOME
-  THE OATVALE
4 BEDROOM DETACHED HOME
-  THE OSMORE
4 BEDROOM DETACHED HOME
-  THE KINFIELD
4 BEDROOM SEMI-DETACHED AND DETACHED HOME
-  THE MADELEY
4 BEDROOM SEMI-DETACHED HOME
-  THE HUNSLEY
3 BEDROOM DETACHED HOME
-  THE HURWICK
3 BEDROOM DETACHED HOME
-  THE GOSFIELD
2 BEDROOM SEMI-DETACHED HOME
-  THE BELFORD
2 BEDROOM TERRACED AND SEMI-DETACHED HOME
-  THE DINFIELD
2 BEDROOM TERRACED AND SEMI-DETACHED HOME
-  AFFORDABLE HOUSING



CALA AT FERNLEIGH PARK THE DEVELOPMENT



The above development layout is not drawn to scale and is for general guidance only. Road layouts, pathways and external treatments may differ. Landscaping is indicative only. Please confirm the most up-to-date details with our Sales Consultant prior to reservation. SS: Sub Station. BCP: Bin Collection Point. CS: Cycle Store.



CALA AT FERNLEIGH PARK
LONG MARSTON

SPECIFICATION



DESIRABLE IN EVERY DETAIL

The finishing touches, unexpected flourishes and innovative features. Designer kitchens with desirable technology built-in, for showing off your culinary flair. Sleek family bathrooms and en suites with high specification sanitaryware, for indulging in some well-deserved pampering.

With every home comfort considered for energy efficient and low maintenance living, each aspect of your family home is beautifully designed and built to an exacting standard; because when you look for premium quality, it's the little things that make all the difference.



SPECIFICATION

KITCHENS

- 1½ bowl stainless steel sink with single drainer and chrome mixer tap with swivel spout
- Bosch built-in single oven (2 & 3 bedroom homes)
- Bosch built-in double oven (4 & 5 bedroom homes)
- Bosch 4-ring touch control induction hob (2 & 3 bedroom homes)
- Bosch 5-ring touch control induction hob (4 & 5 bedroom homes)
- Indesit built-in fridge/freezer and integrated dishwasher (2 & 3 bedroom homes)
- Bosch built-in fridge/freezer and integrated dishwasher (4 & 5 bedroom homes)
- Integrated wine cooler (The Osmore & 5 bedroom homes)
- Indesit integrated washing machine (2 & 3 bedroom homes)
- Bosch integrated washing machine (4 & 5 bedroom homes with no utility room)
- Amtico Spacia flooring[^]
- Homes with a utility room to have one or two spaces for your own washing machine and dryer†

FAMILY BATHROOMS, EN SUITE(S) AND CLOAKROOM

- Roca sanitaryware
- High gloss vanity units to family bathroom and en suite 1 (3, 4 & 5 bedrooms homes only)
- Full height tiling around bath with thermostatically controlled shower and glass shower door in family bathroom (except when there is a separate shower cubicle)
- Half height tiling around bath with low level handheld shower attachment in family bathroom and en suites (when there is a separate shower cubicle)
- Full height tiling to shower cubicles
- Vado thermostatically controlled showers
- Vado mixer taps
- Chrome heated towel rails to cloakroom, family bathroom and en suite(s)
- Shaver socket to family bathroom and en suite(s)
- Amtico Spacia flooring to cloakroom, family bathroom and en suite(s)[^]

MEDIA AND COMMUNICATIONS

- Pre-wiring for TV/satellite (compatible with Sky Q) to all rooms with a TV socket
- Telephone sockets to sitting room and study/smallest bedroom providing access to BT or Virgin fibre broadband
- USB charging port sockets to kitchen/family room and bedroom 1

HEATING, LIGHTING AND INTERNAL FINISHES

- Recessed downlights to kitchen/breakfast/family room, utility, family bathroom, cloakroom and en suite(s). Pendant light fitting to all other rooms*
- Chrome sockets and switches to the ground floor (The Osmore & 5 bedroom homes)
- Smooth ceilings and internal walls finished in white matte emulsion
- White 5 panel doors to all rooms
- Aluminium bi-fold doors to kitchen/family room (The Osmore, Solville & Marston)
- Aluminium bi-fold doors to sitting room (The Tilhurst)
- Dressing room to bedroom 1 (The Madeley, Osmore, Solville and bedroom 2 The Marston)
- Built-in wardrobes to bedroom 1, 2 & 3 on selected homes†
- Thermostatically controlled radiators throughout
- Double sockets throughout
- Engineered timber floor joists to first floor
- Ceiling mounted smoke and heat detectors

SECURITY

- Outside lights to front, rear and side doors (as applicable)
- Dusk-to-dawn sensor lights outside front door
- Multi-point locking system to front door
- Fuse Spur for security alarm

ENVIRONMENTAL DETAILS

- Energy efficient and thermostatically controlled gas central heating and A-rated boiler to minimise gas usage
- Smart meters installed to record your energy use and automatically send out meter readings
- Double-glazed PVCu windows providing a high level of thermal insulation and reduced heat loss
- A and B rated kitchen appliances to reduce water and energy use
- Dual flush mechanism to toilets to reduce water use
- Ecological site design enhancing local wildlife and habitats
- High levels of insulation within roof spaces and external wall cavities to limit heat loss in the winter and reduce heat gain in the summer
- Dusk-to-dawn sensors to the front door external lighting to reduce electricity usage
- Low energy lighting throughout
- Significant amounts of recycling of waste materials and packaging during the construction of each home to reduce the environmental impact of the development

EXTERNAL DETAILS

- Paved patio area to rear garden
- Landscaped front garden, turf to rear garden
- External electrical point to the rear of home
- External water tap
- Retractable garage doors with batten light installed (where applicable)*
- Double socket to the garage (where applicable)*
- Electric Vehicle fast charging as standard (The Tilhurst & Solville). Slow charging available as an optional extra to selected homes^{^†}

[^]Choice subject to build stage.

*Please see detailed specification and floorplans for further information. †Dependent on housetype. Specifications are correct at time of going to print. Any alterations to the specifications will be of equal or greater value and CALA reserves the right to implement changes to the specifications without warning. Whilst these particulars are prepared with all due care for the convenience of intending purchasers, the information is intended as a preliminary guide only. For more information please speak to a Sales Consultant. Whilst these particulars are prepared with all due care for the convenience of intending purchasers, the information is intended as a preliminary guide only. For more information please speak to a Sales Consultant.



CALA.CO.UK

CALA HOMES (MIDLANDS) LTD, CALA HOUSE, ARLESTON WAY, SOLIHULL, B90 4LH | 0121 711 5310

The consumer protection from unfair trading regulations 2008. CALA Homes (Midlands) Limited operates a policy of continual product development and the specifications outlined in this brochure are indicative only. CALA reserves the right to implement minor changes to the sizes and specifications shown on any plans or drawings in this brochure without warning. Where alterations to the design, construction or materials to be used in the construction of the property would materially alter the internal floor space, appearance or market value of the property, we will ensure that these changes are communicated to potential purchasers. Whilst these particulars are prepared with all due care for the convenience of intending purchasers, the information is intended as a guide. Floor plans, dimensions and specifications are correct at the time of print.