

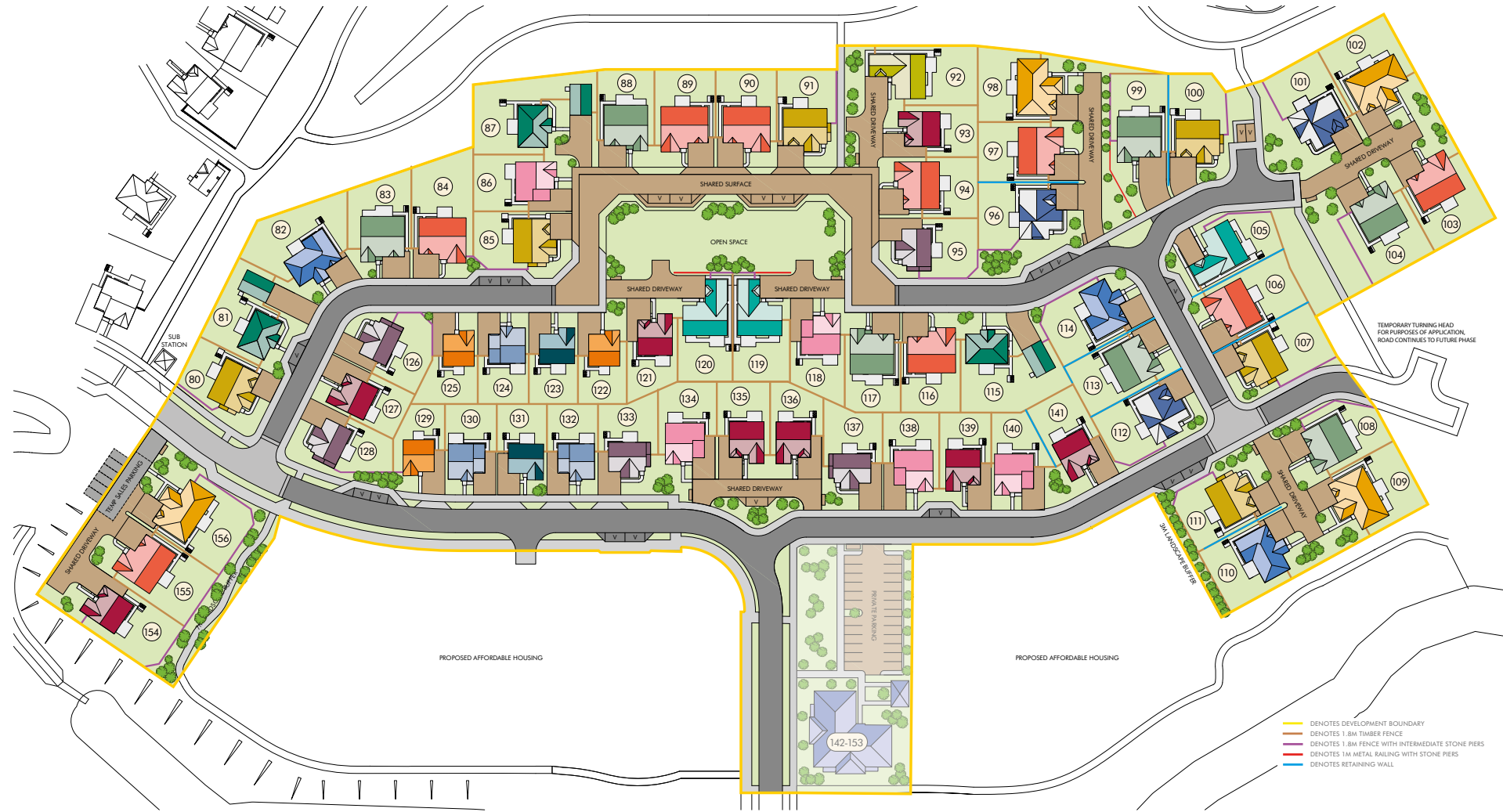






BALGRAY GARDENS
MAIDENHILL, NEWTON MEARNES




DETACHED HOMES
FLOORPLANS


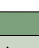

BALGRAY GARDENS - MAIDENHILL. NEWTON MEARNS




Development layout subject to final planning approval






-  **THE BARGOWER**
4 BEDROOM DETACHED HOME
PLOTS 122, 125, 129
-  **THE BARRIE**
4 BEDROOM DETACHED HOME
PLOTS 123, 131
-  **THE BRYCE**
4 BEDROOM DETACHED HOME
PLOTS 124, 130, 132
-  **THE CLELAND**
4 BEDROOM DETACHED HOME
PLOTS 95, 126, 128, 133, 137






-  **THE COLVILLE**
4 BEDROOM DETACHED HOME WITH STUDY
PLOTS 93, 121, 127, 135, 136, 139,
141, 154
-  **THE DARROCH**
5 BEDROOM DETACHED HOME
PLOTS 86, 118, 134, 138, 140
-  **THE ELLIOT**
4 BEDROOM DETACHED HOME
WITH RECREATION SPACE ABOVE THE GARAGE
PLOTS 81, 87, 115

-  **THE KENNEDY**
5 BEDROOM DETACHED HOME
PLOTS 82, 110, 114
-  **THE LEWIS**
5 BEDROOM DETACHED HOME
PLOTS 83, 88, 99, 104, 108,
113, 117
-  **THE LOGAN**
5 BEDROOM DETACHED HOME
PLOTS 80, 85, 91, 100,
107, 111

-  **THE LOWTHER**
5 BEDROOM DETACHED HOME
PLOTS 96, 101, 112
-  **THE MELVILLE IC**
5 BEDROOM DETACHED HOME
PLOT 92
-  **THE MELVILLE SE**
5 BEDROOM DETACHED HOME
PLOTS 105, 119, 120

-  **THE MONCRIEF**
5 BEDROOM DETACHED HOME
PLOTS 84, 89, 90, 94, 97, 103,
106, 116, 155
-  **THE RAMSAY**
5 BEDROOM DETACHED HOME
PLOTS 98, 102, 109, 156

-  **LOCKHART APARTMENTS**
1 & 2 BEDROOM HOMES
PLOTS 142 - 153

-  DENOTES DEVELOPMENT BOUNDARY
-  DENOTES 1.8M TIMBER FENCE
-  DENOTES 1.8M FENCE WITH INTERMEDIATE STONE PIERS
-  DENOTES 1M METAL RAILING WITH STONE PIERS
-  DENOTES RETAINING WALL

The development layout is not drawn to scale and is for general guidance only. Road layouts, pathways, parking bays and external treatments may differ. Landscaping is indicative only. Please confirm the most up-to-date details with our Sales Consultant prior to reservation.



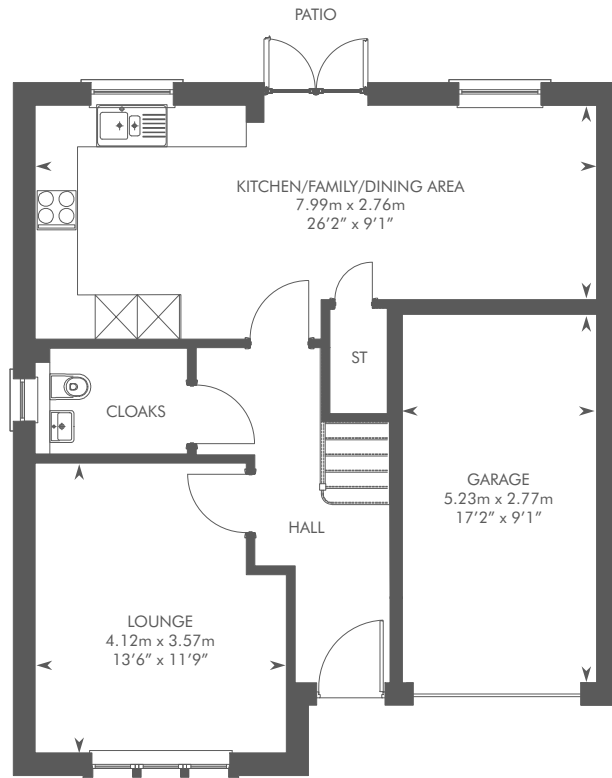
Computer Generated Image – A typical Bargower

THE BARGOWER

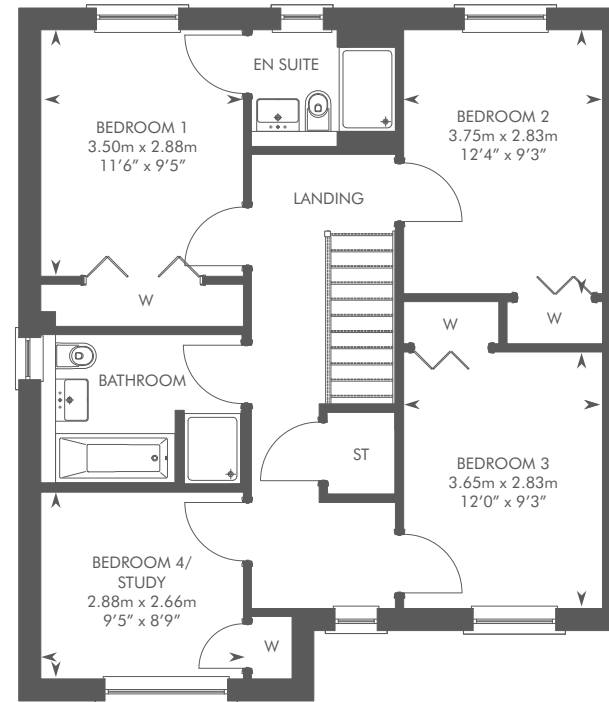
4 BEDROOM DETACHED HOME



THE BARGOWER
PLOTS 122, 125, 129



GROUND FLOOR



FIRST FLOOR

Please ask your Sales Consultant for further details. ST: Store cupboard. W: Wardrobe.



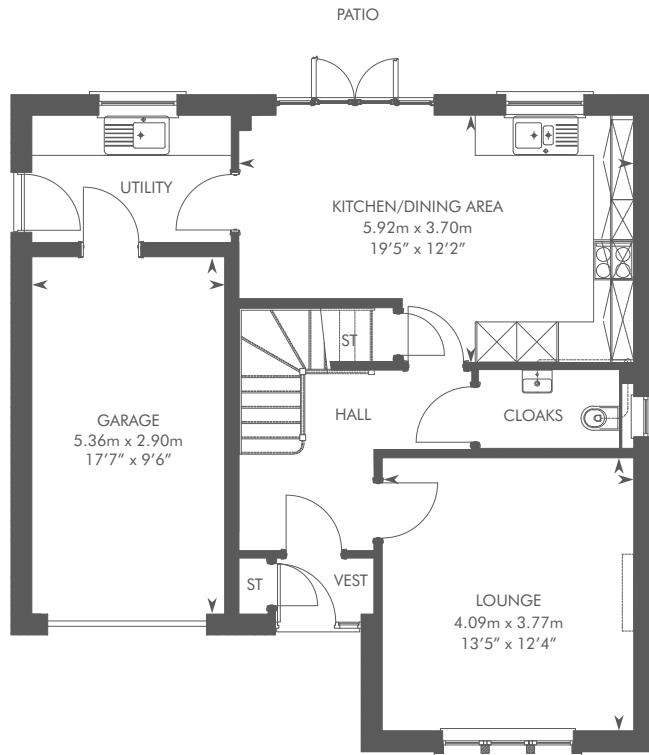
Computer Generated Image - A typical Barrie

THE BARRIE

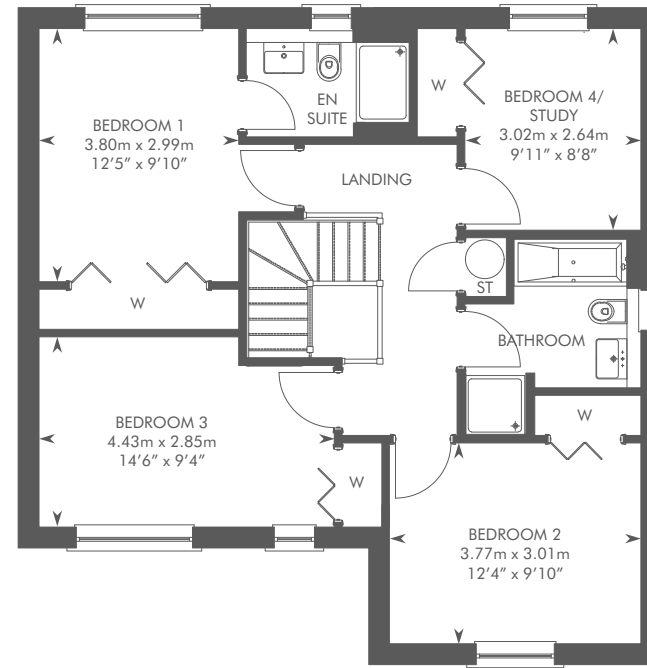
4 BEDROOM DETACHED HOME



THE BARRIE
PLOTS 123, 131



GROUND FLOOR



FIRST FLOOR

Please ask your Sales Consultant for further details. ST: Store cupboard. W: Wardrobe.



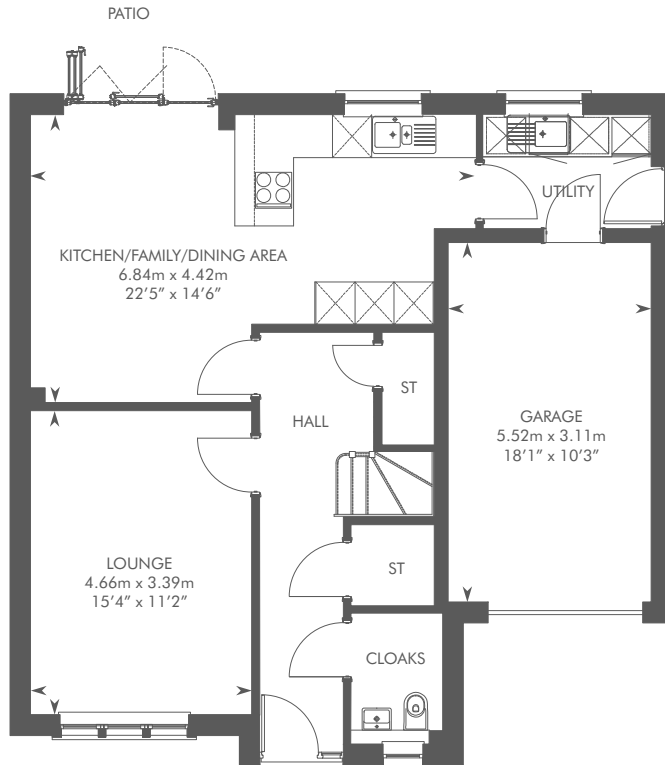
Computer Generated Image – A typical Bryce

THE BRYCE

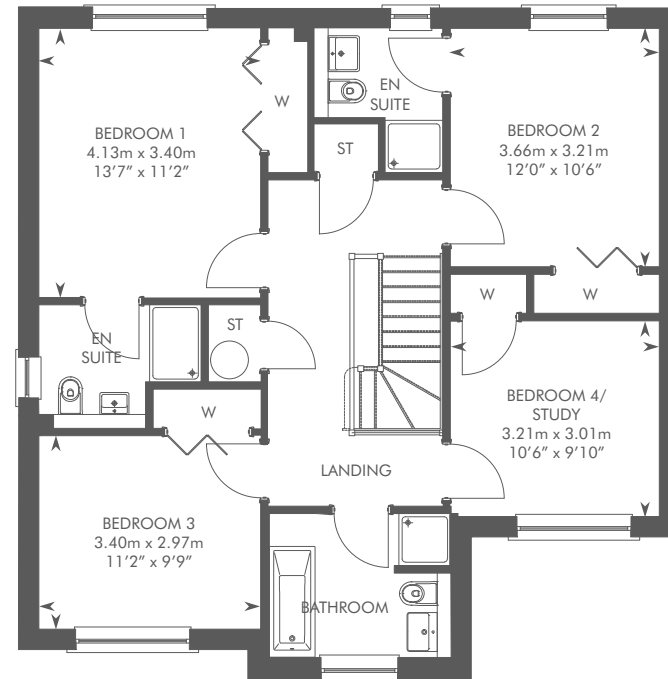
4 BEDROOM DETACHED HOME



THE BRYCE
PLOTS 124, 130, 132



GROUND FLOOR



FIRST FLOOR

Please ask your Sales Consultant for further details. ST: Store cupboard. W: Wardrobe.



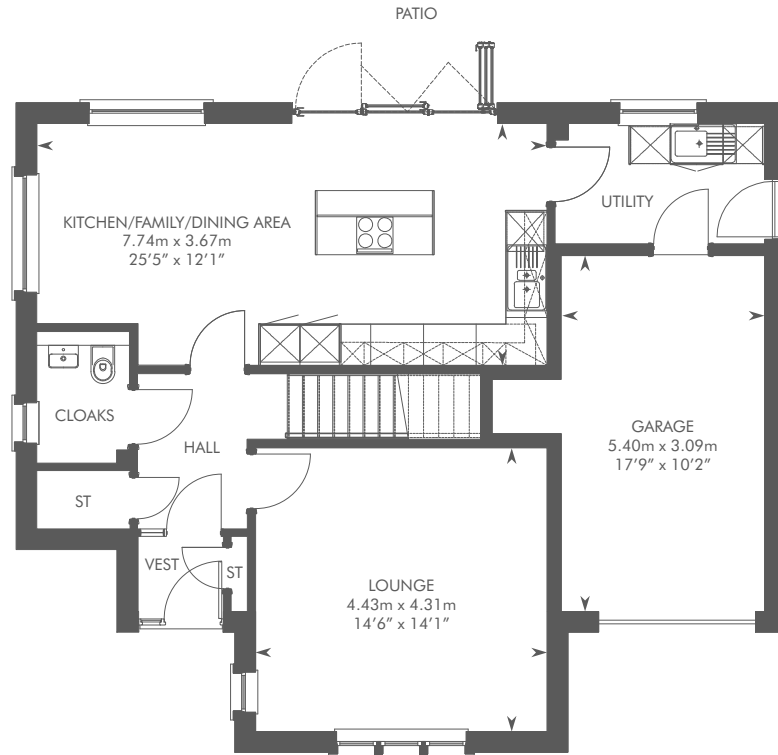
Computer Generated Image – A typical Cleland

THE CLELAND

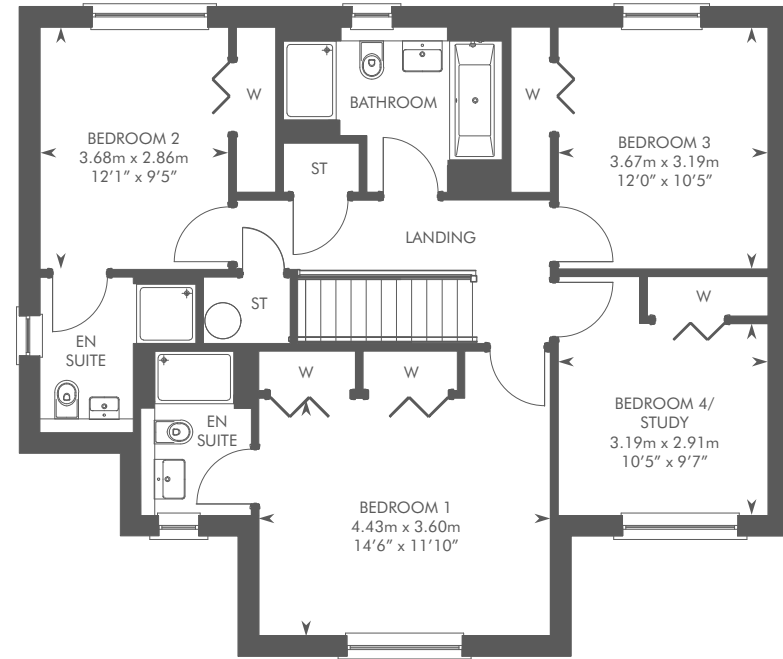
4 BEDROOM DETACHED HOME



THE CLELAND
PLOTS 95, 126, 128, 133, 137



GROUND FLOOR



FIRST FLOOR

Please ask your Sales Consultant for further details. ST: Store cupboard. W: Wardrobe.



Computer Generated Image – A typical Colville

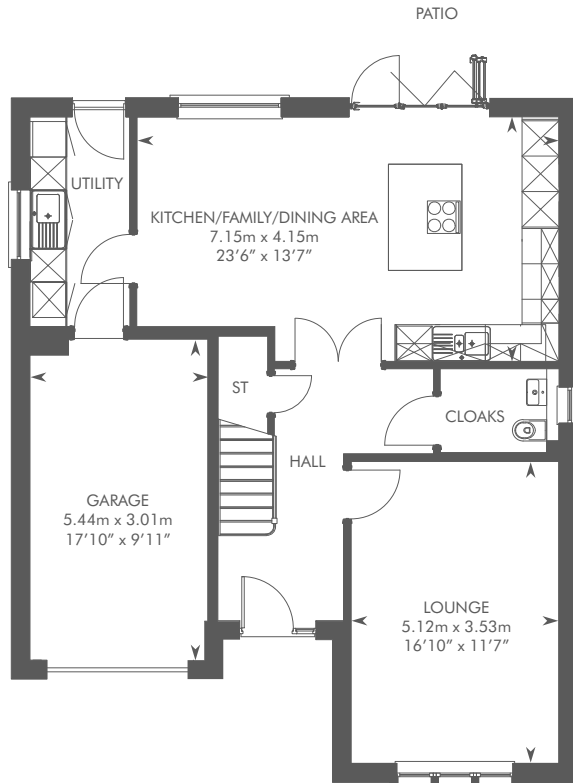
THE COLVILLE

4 BEDROOM DETACHED HOME WITH STUDY

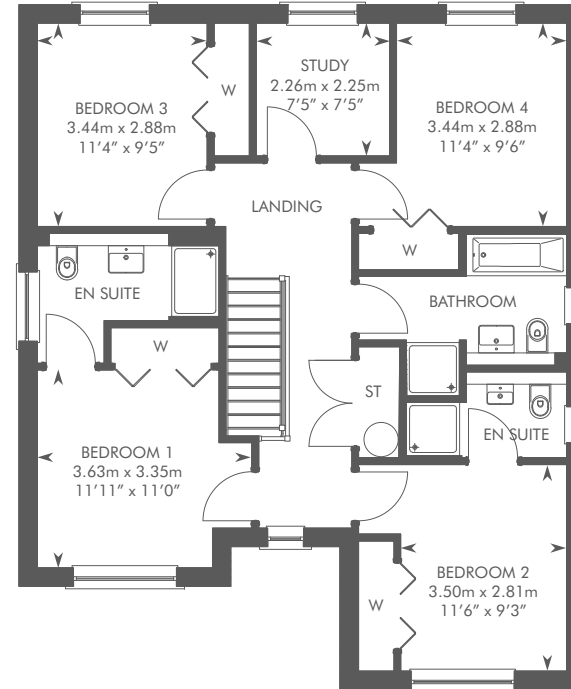


THE COLVILLE

PLOTS 93, 121, 127, 135, 136, 139, 141, 154



GROUND FLOOR



FIRST FLOOR

Please ask your Sales Consultant for further details. ST: Store cupboard. W: Wardrobe.



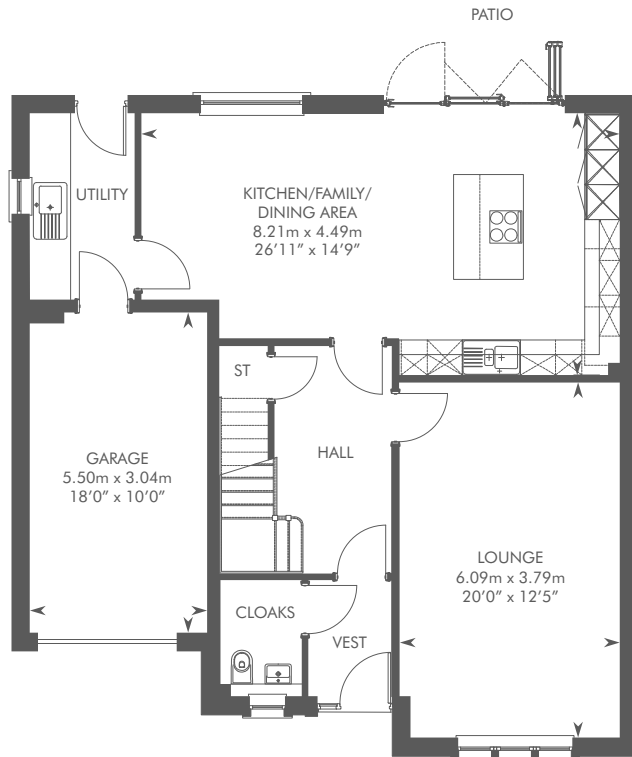
Computer Generated Image - A typical Darroch

THE DARROCH

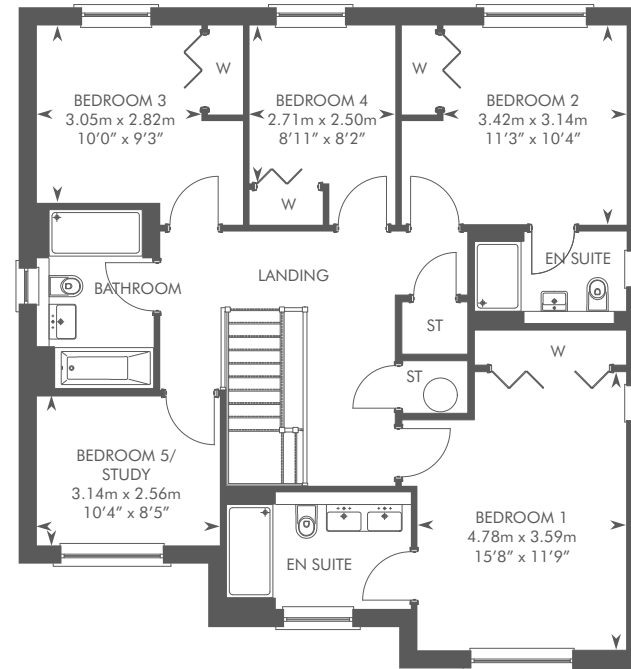
5 BEDROOM DETACHED HOME



THE DARROCH
PLOTS 86, 118, 134, 138, 140



GROUND FLOOR



FIRST FLOOR

Please ask your Sales Consultant for further details. ST: Store cupboard. W: Wardrobe.



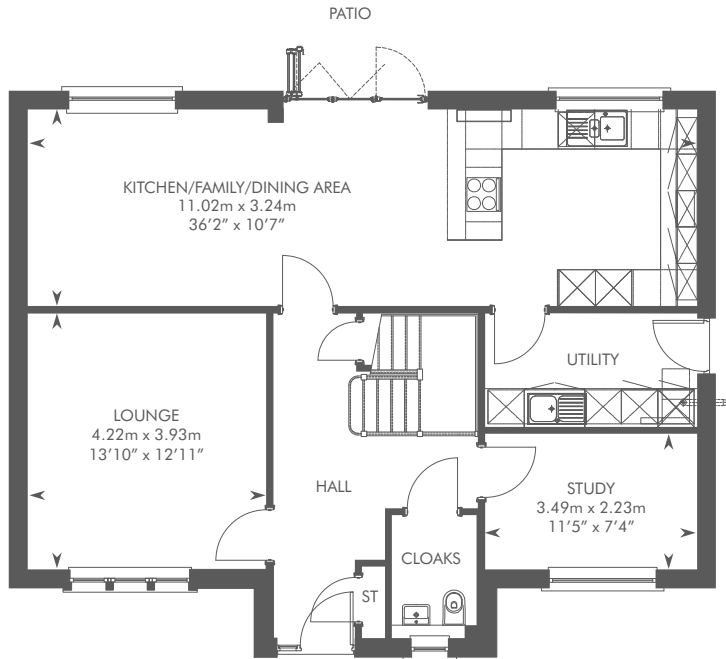
Computer Generated Image – A typical Elliot ST

THE ELLIOT ST

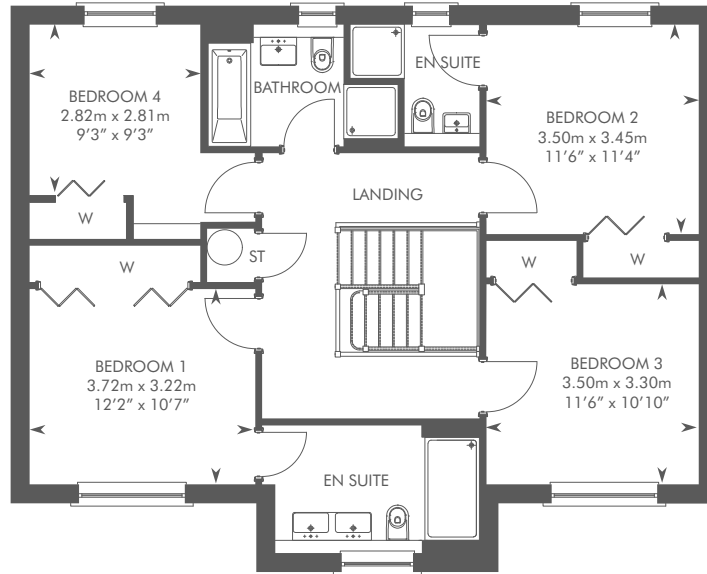
4 BEDROOM DETACHED HOME WITH RECREATION SPACE ABOVE THE GARAGE



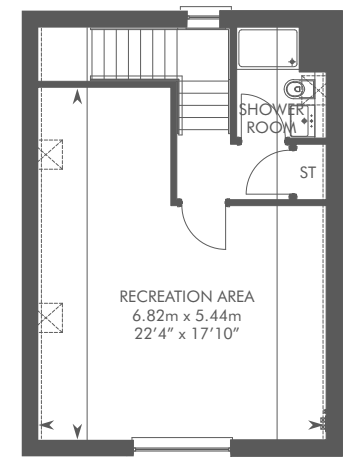
THE ELLIOT ST
PLOTS 81, 87, 115



GROUND FLOOR

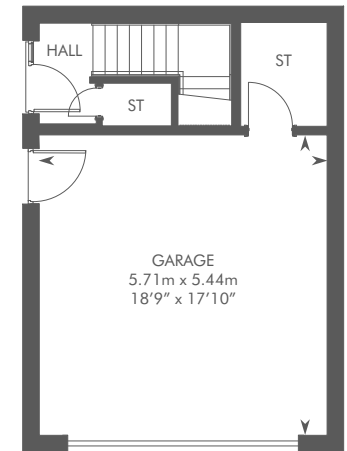


FIRST FLOOR



COOMBE CEILING --- ROOF LIGHT

GARAGE FIRST FLOOR



GARAGE GROUND FLOOR

Garage door location is plot specific and may vary. Patios are designed to plot specific requirements and may vary in size. Please ask your Sales Consultant for further details. ST: Store cupboard. W: Wardrobe.



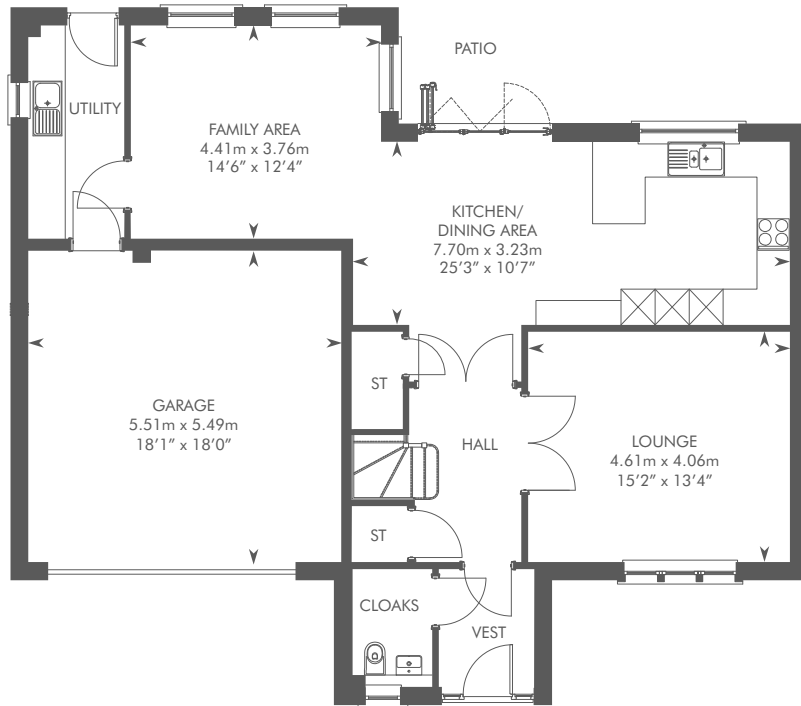
Computer Generated Image - A typical Kennedy

THE KENNEDY

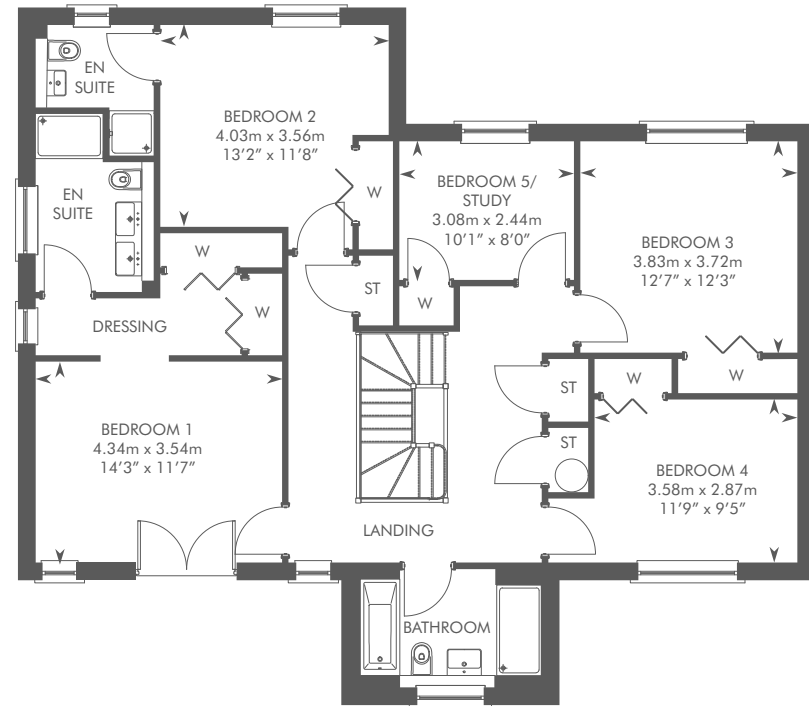
5 BEDROOM DETACHED HOME



THE KENNEDY
PLOTS 82, 110, 114



GROUND FLOOR



FIRST FLOOR

Please ask your Sales Consultant for further details. ST: Store cupboard. W: Wardrobe.



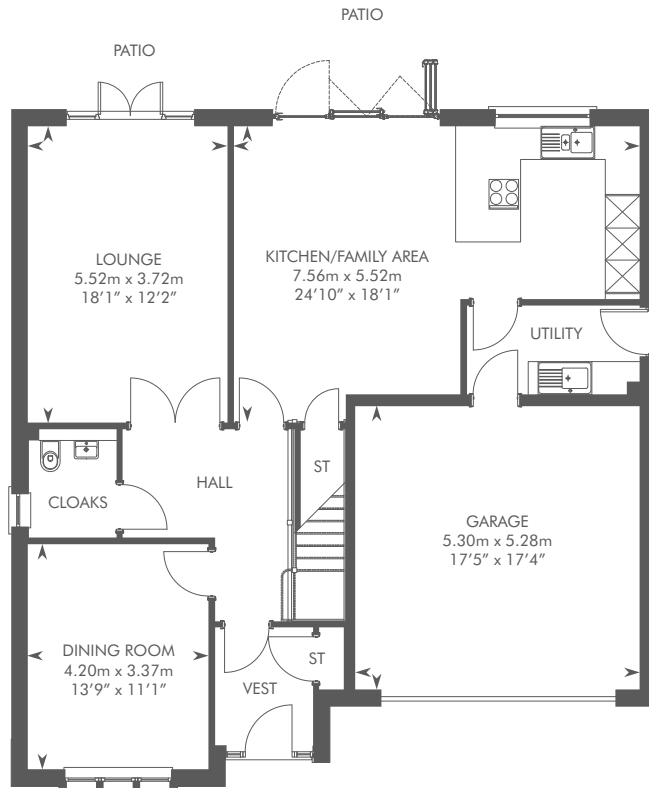
THE LEWIS

5 BEDROOM DETACHED HOME

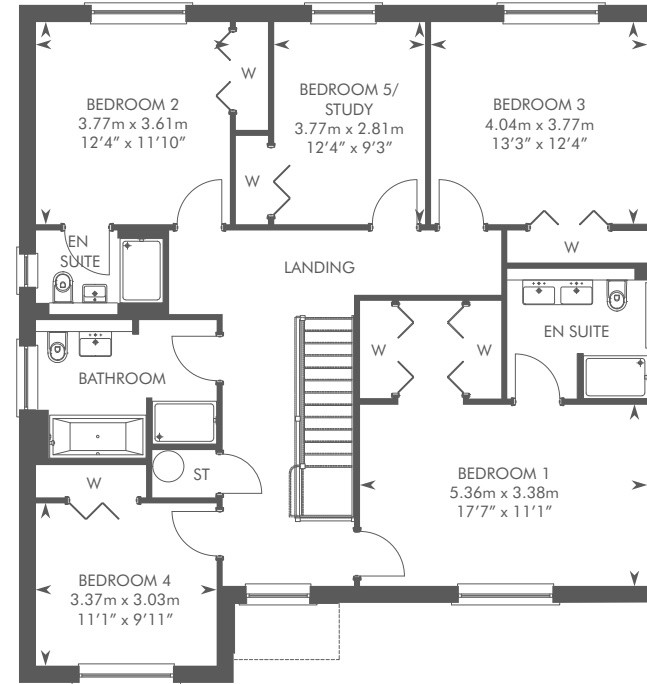


THE LEWIS

PLOTS 83, 88, 99, 104, 108, 113, 117



GROUND FLOOR



FIRST FLOOR

Please ask your Sales Consultant for further details. ST: Store cupboard. W: Wardrobe.



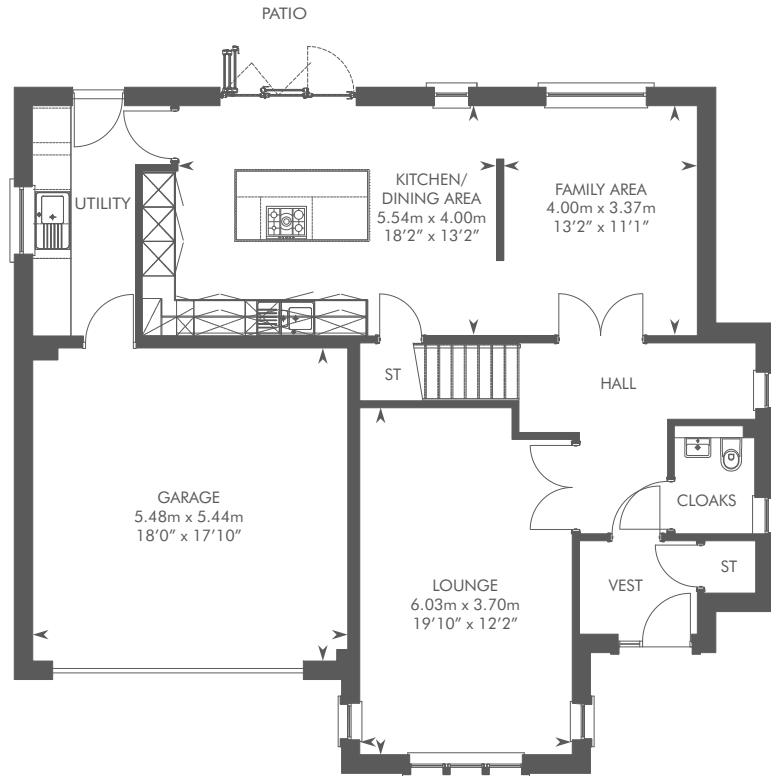
Computer Generated Image - A typical Logan

THE LOGAN

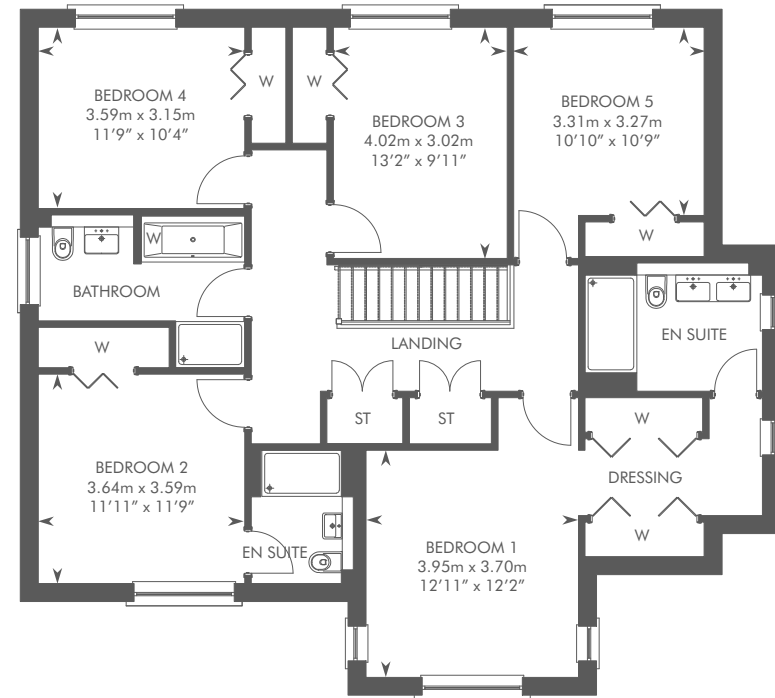
5 BEDROOM DETACHED HOME



THE LOGAN
 PLOTS 80, 85, 91, 100, 107, 111



GROUND FLOOR



FIRST FLOOR

Patios are designed to plot specific requirements and may vary in size. Please ask your Sales Consultant for further details. ST: Store cupboard. W: Wardrobe.

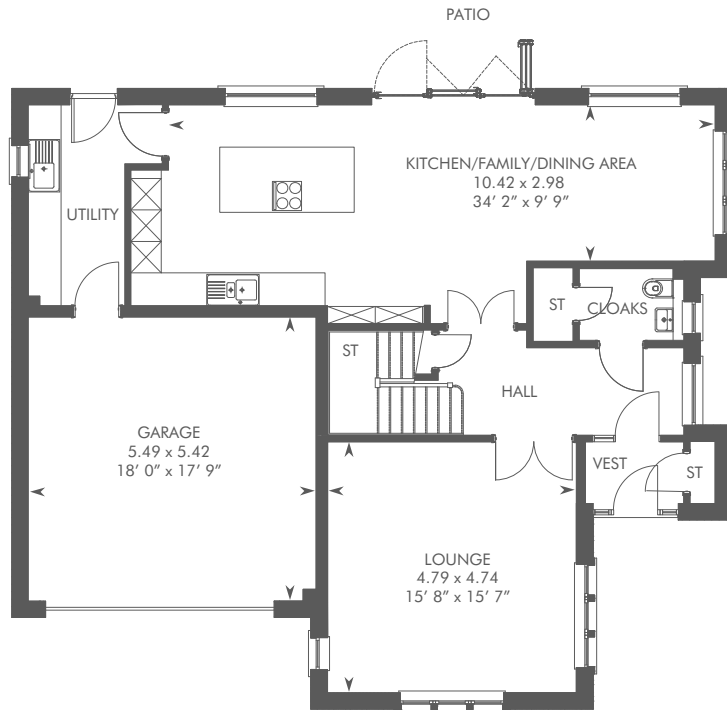


Computer Generated Image - A typical Lowther

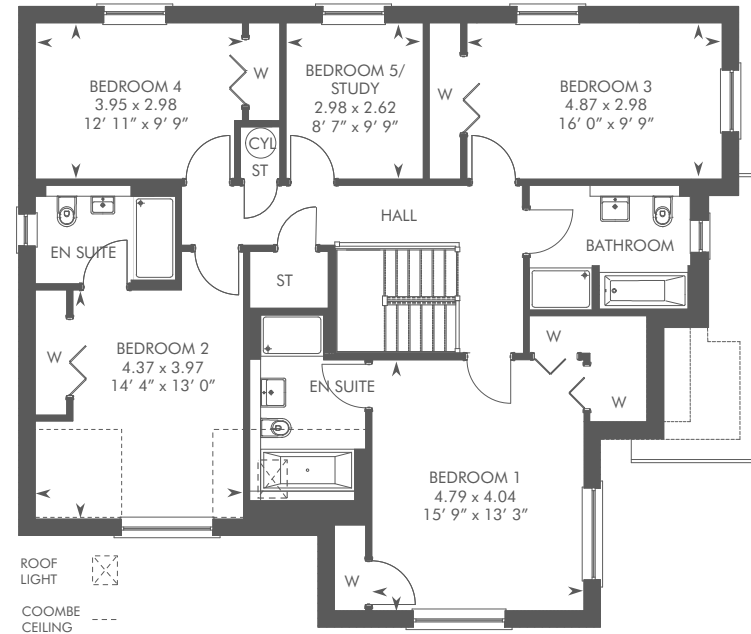
THE LOWTHER

5 BEDROOM DETACHED HOME





GROUND FLOOR



FIRST FLOOR

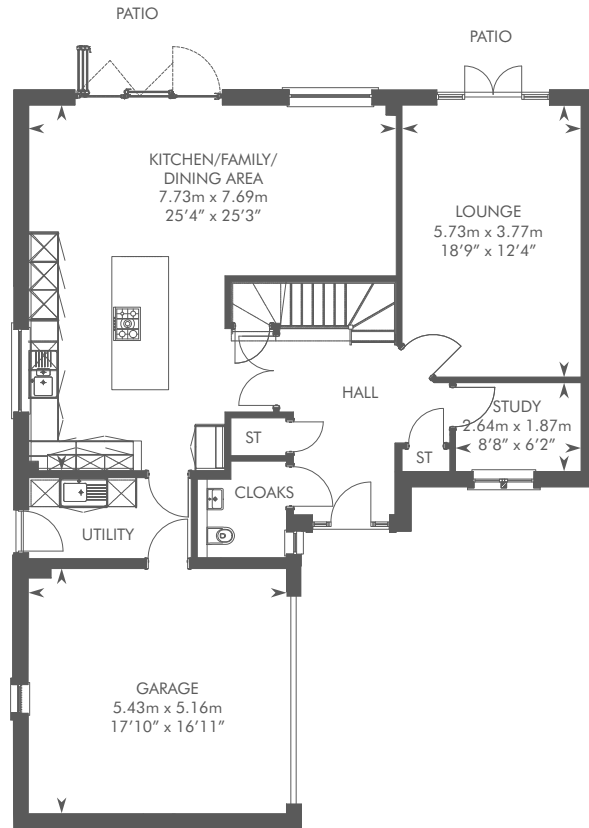


Computer Generated Image - A typical Melville IC

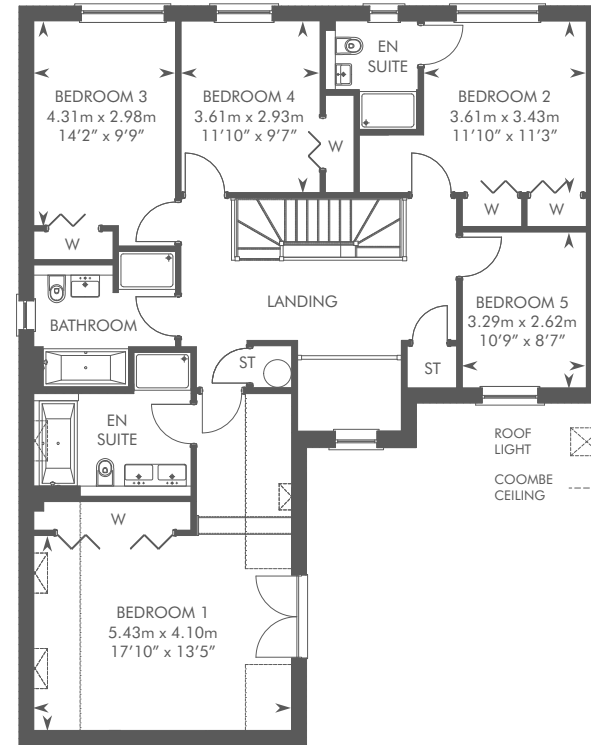
THE MELVILLE IC

5 BEDROOM DETACHED HOME





GROUND FLOOR



FIRST FLOOR

Please ask your Sales Consultant for further details. ST: Store cupboard. W: Wardrobe.



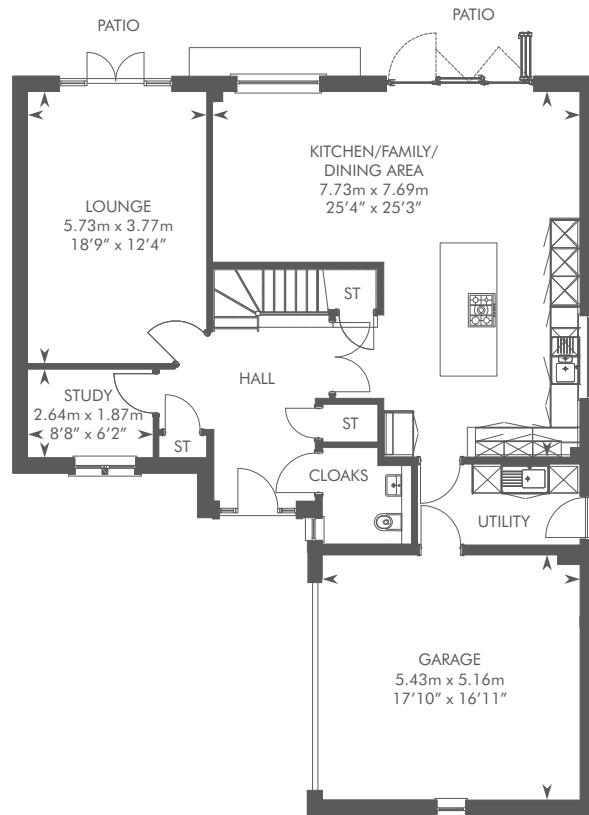
Computer Generated Image – A typical Melville SE

THE MELVILLE SE

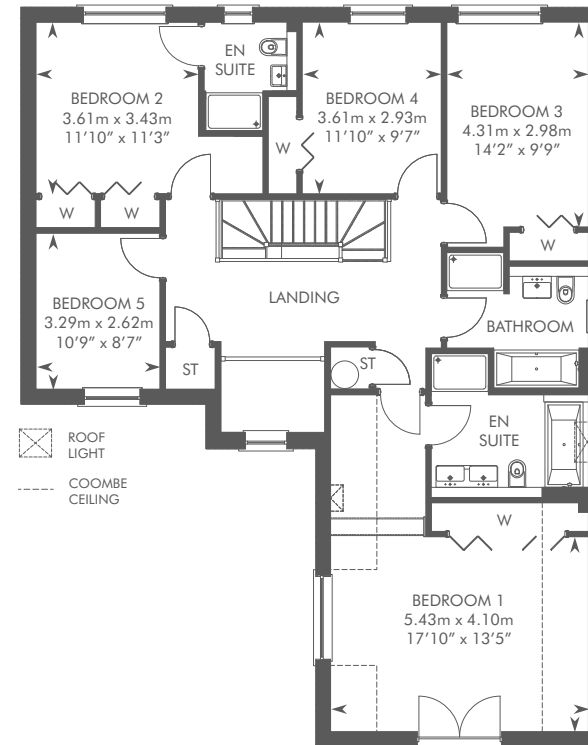
5 BEDROOM DETACHED HOME



THE MELVILLE SE
PLOTS 105, 119, 120



GROUND FLOOR



FIRST FLOOR

Please ask your Sales Consultant for further details. ST: Store cupboard. W: Wardrobe.



Computer Generated Image – A typical Moncrief

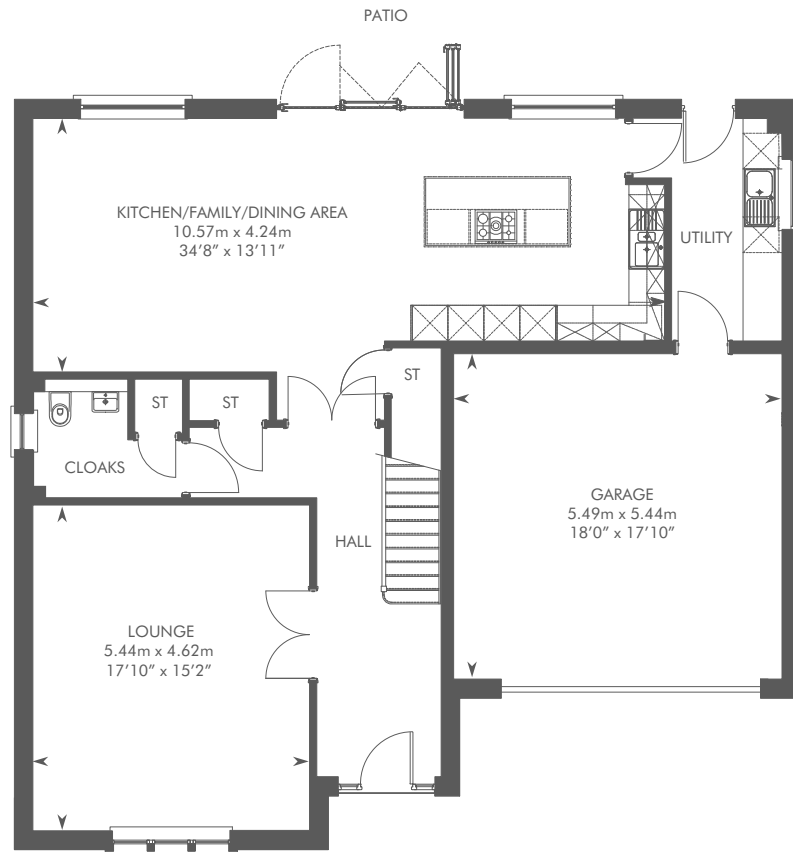
THE MONCRIEF

5 BEDROOM DETACHED HOME

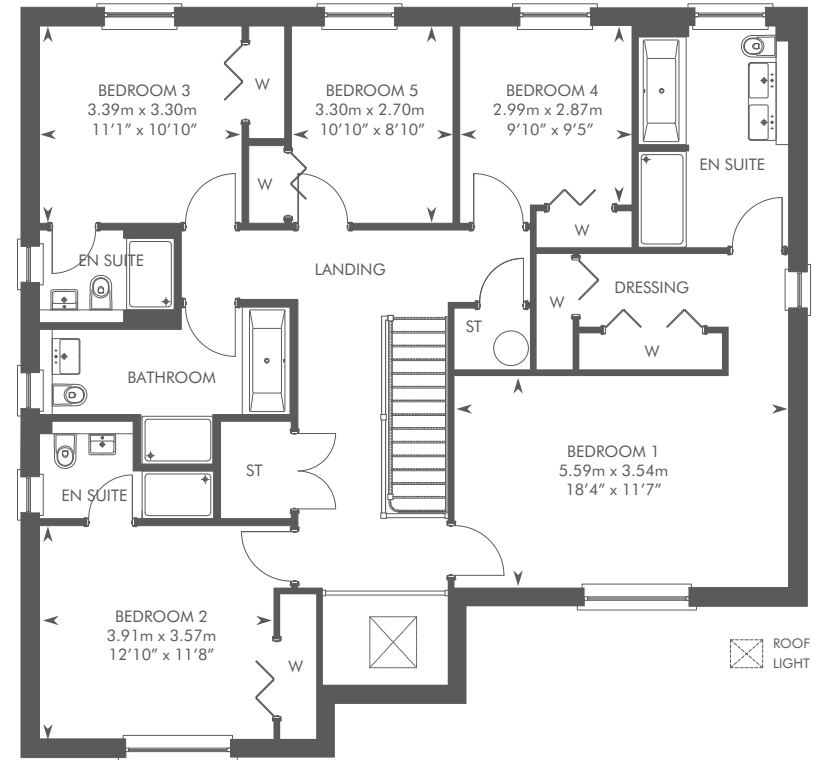


THE MONCRIEF

PLOTS 84, 89, 90, 94, 97, 103, 106, 116, 155



GROUND FLOOR



FIRST FLOOR

Please ask your Sales Consultant for further details. ST: Store cupboard. W: Wardrobe.

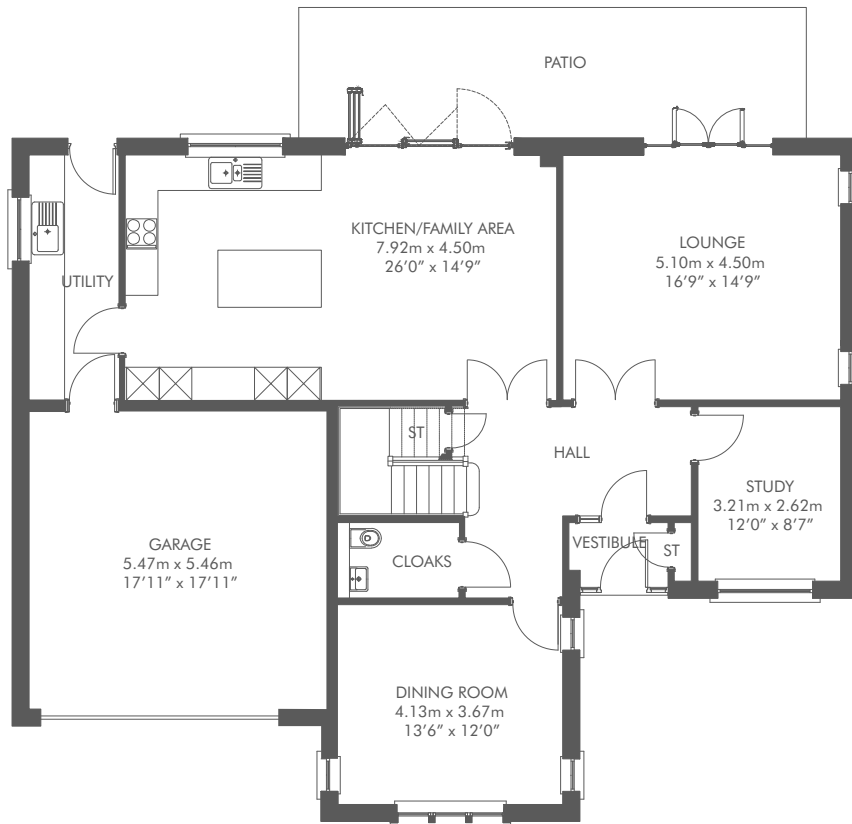


Computer Generated Image – A typical Ramsay

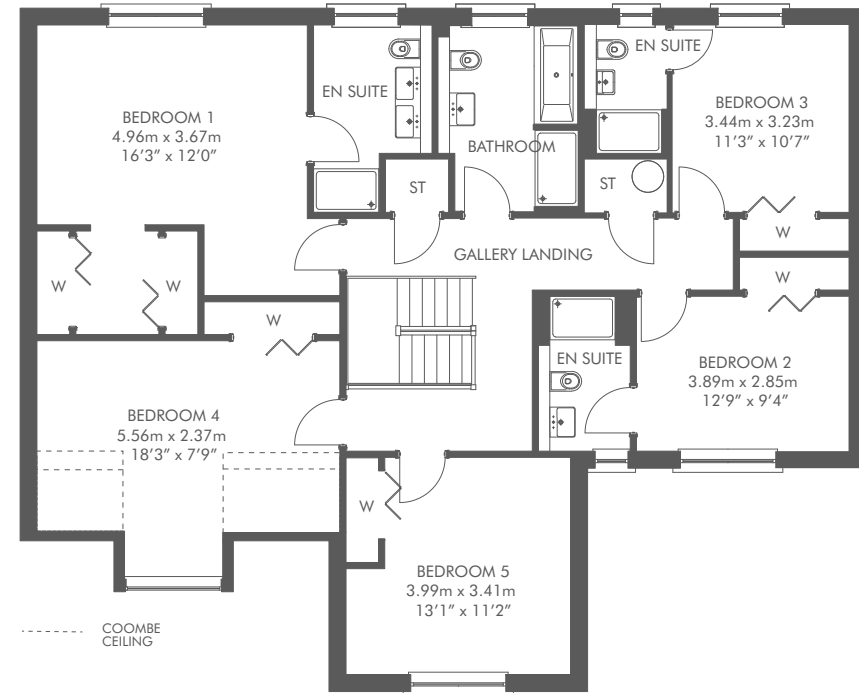
THE RAMSAY

5 BEDROOM DETACHED HOME





GROUND FLOOR



FIRST FLOOR

Please ask your Sales Consultant for further details. ST: Store cupboard. W: Wardrobe.



CALA.CO.UK



CALA HOMES, BALGRAY GARDENS, AYR ROAD, MAIDENHILL, NEWTON MEARNS, G77 5GR

IMPORTANT NOTICE TO CUSTOMERS: The Consumer Protection from Unfair Trading Regulations 2008. CALA Homes (West) Limited operates a policy of continual product development and the specifications outlined in this brochure are indicative only. CALA reserves the right to implement minor changes to the sizes and specifications shown on any plans or drawings in this brochure without warning. Where alterations to the design, construction or materials to be used in the construction of the property would materially alter the internal floor space, appearance or market value of the property, we will ensure that these changes are communicated to potential purchasers. Whilst these particulars are prepared with all due care for the convenience of intending purchasers, the information is intended as a guide. The computer generated images and photographs do not necessarily represent the actual finishings/elevation or treatments, landscaping, furnishings and fittings at this development. Floor plans, dimensions and specifications are correct at the time of print. The illustrated location map is a general guide only. Please note that distances and timings referred to in this brochure are approximate and sourced from Google Maps. For information relating to weather in the area of this development, please refer to the Meteorological Office (www.metoffice.gov.uk). Nothing contained in this brochure shall constitute or form part of any contract. Information contained in this brochure is accurate at time of going to press on 27.04.21. CALA (West) Limited, registered in Scotland company number SC222577. Registered office: Johnstone House, 52-54 Rose Street, Aberdeen AB10 1HA; Agent of CALA Management Limited.